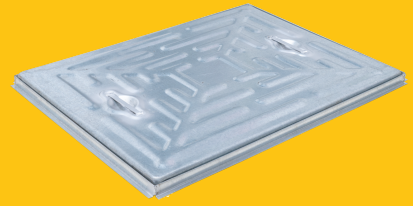


## C211L/060045PSF

Pressed Steel Access Cover, 600mm x 450mm clear opening, 25mm depth, Loading code L



CLEAR OPENING (MM)	OVERALL TOP OF FRAME (MM)	FRAME DEPTH (MM)	LOAD DUTY
600 x 450	625 x 475	25	Domestic light duty

## KEY FEATURES

- ✓ Hot dipped galvanised for corrosion resistance.
- ✓ Keyway lifting points are provided on the frame for safe handling.
- ✓ Covers are supplied with built in concealed lifting handles for cover removal without the need for manhole keys or tools.

## SPECIFICATION

### General information

Stock code	C211L/060045PSF
Primary material	Steel
Category	Access cover
Flanges	4
Gross laden vehicle weight	5 tn
Load duty	Domestic light duty
Slow moving wheel load (pneumatic tyres)	1.25 tn
Seal type	Single seal

## Standards, classes and groupings

**Wrekin loading code**

L

## Dimensions

**Frame shape**

Rectangular

**Overall top of frame (A x B)**

475 mm x 625 mm

**Clear opening (C x D)**

600 mm x 450 mm

**Frame depth (E)**

25mm

**Base opening (F x G)**

1. Wrekin Products Ltd is continually seeking to improve our products and therefore reserves the right to alter product specifications without prior notice.
2. It is the responsibility of all users to satisfy themselves the above data is current.
3. Installation details are available on request.
4. All Wrekin products are supplied subject to our [Terms and Conditions of Sale](#)

