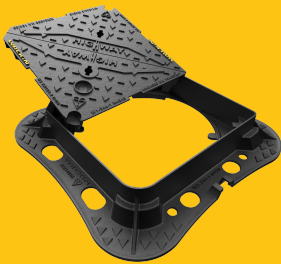


DMTOD4/4545/KHSQR

Highway D400 manhole cover 450mm diameter clear opening with 100mm frame depth



RANGE	CLEAR OPENING (MM)	OVERALL FRAME (MM)	FRAME DEPTH (MM)	OPTIONS
Highway	Ø 450	660 x 660	100	<div><input type="checkbox"/> Screw locking</div> <div><input type="checkbox"/> Integral badging</div> <div><input type="checkbox"/> Ventilation holes</div> <div><input type="checkbox"/> Flood and odour control plate</div> <div><input type="checkbox"/> Safety grille</div> <div><input type="checkbox"/> Factory-applied badging</div>

KEY FEATURES

- ✓

The enlarged frame corners help to dissipate loads onto the foundation, providing a longer service life and increased reliability.
- ✓

Safety keyway prevents accidental disengagement of the lifting key during the handling process.
- ✓

Meets the requirements of CD 534 v0.1.0 (formerly HA 104/09).
- ✓

The high seating position ensures that forces are transmitted more directly downwards, meaning conversion of traffic loads into mortar-compatible compression forces.
- ✓

Keyway lifting points are provided on the frame for safe handling.
- ✓

Surface texturing above and below the flange enables better mortar engagement, reducing any lateral movement which could result in cracking.
- ✓

A retrofittable ID badge can be fitted, also compatible with antennas and communication options (RFID, NFC, IoT)
- ✓

70+ PSRV tested at top surface of chequer by UKAS accredited 3rd party.
- ✓

Frame gussets are supports which reinforce the corners where the frame sections meet, distributing stress evenly, preventing damage to the frame or the access cover.
- ✓

Indexed corners ensure correct orientation first time, every time.
- ✓

Holes in the frame flange where mortar can pass between the underside and top side, creating an interlock, providing greater strength.
- ✓

Non rocking 3-point suspension design, for silent operation.

SPECIFICATION

General information

Stock code	DMTOD4/4545/KHSQR
Primary material	Ductile iron
Range	Highway
Category	Manhole cover
Flanges	4

Standards, classes and groupings

Standards	BS EN 124-2 DMRB MCHW CD 534 v0.1.0
BS EN 124 Class	D400
BS EN 124 Group	4
Third party certified	Kitemark

Dimensions

Frame shape	Square
Manhole shape	Circular
Overall frame (A x B)	660 mm x 660 mm
Clear opening (C x D)	Ø 450 mm
Frame depth (E)	100mm
Base opening (F x G)	Ø 490 mm

AVAILABLE OPTIONS

✓ Screw locking

Screw locking deters unauthorised access to the chamber. An extended shank socket set is required to engage the locking screw.

✓ Ventilation holes

Provide additional cover ventilation in addition to the product's natural ventilation, up to the BS EN 124 allowance.

✓ Safety grille

Safety grilles prevent accidental chamber falls. Available in a variety of configurations; including bars and mesh as drop-in or hinged.

✓ Industry standard badging

Integral industry-standard badging e.g. SW (Storm Water) and FW (Foul Water). Details are taken at point of order.

✓ Flood and odour control plate

The flood and odour control plate is manufactured from steel and provides resistance to flood-water ingress and the chamber-odour egress.

✓ ID badging and communications options

Bespoke badging and communications antennae, including NFC, RFID and IoT technology.

ACCESSORIES

STOCK CODE	DESCRIPTION
PC/UNIFORM/151076	Uniform chamber adjustment unit 760mm x 100mm x 15mm
PC/UNIFORM/251076	Uniform chamber adjustment unit 760mm x 100mm x 25mm
PC/UNIWEDGE/755012	Uniform support wedge 120mm x 50mm x 75mm
YPCR/U12.5	12.5Kg Unipak® rapid curing polyester resin mortar
YPCR/U25	25Kg Unipak® rapid curing polyester resin mortar
GRITBLOCKER	Anti-blockage keyway insert
SCREWLIFT	Manhole cover levelling system
KEY/LONG	Large cover lifting keys with a long handle (sold as a pair)

STOCK CODE	DESCRIPTION
KEYSHEAVY	Large cover lifting keys with a standard handle (sold as a pair)
KEYS/L	Small cover combined lifting key
DREDRING/45/35	Reducer ring with a 350mm inner diameter and 460mm outer diameter

NOTES

All values stated are nominal within 2.5% tolerance.

1. Wrekin Products Ltd is continually seeking to improve our products and therefore reserves the right to alter product specifications without prior notice.
2. It is the responsibility of all users to satisfy themselves the above data is current.
3. Installation details are available on request.
4. All Wrekin products are supplied subject to our [Terms and Conditions of Sale](#)

