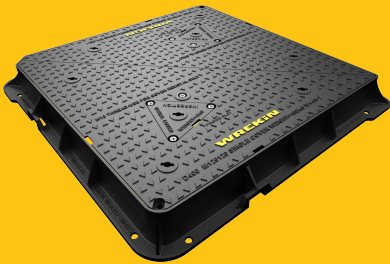


DMTOD6/1212/4

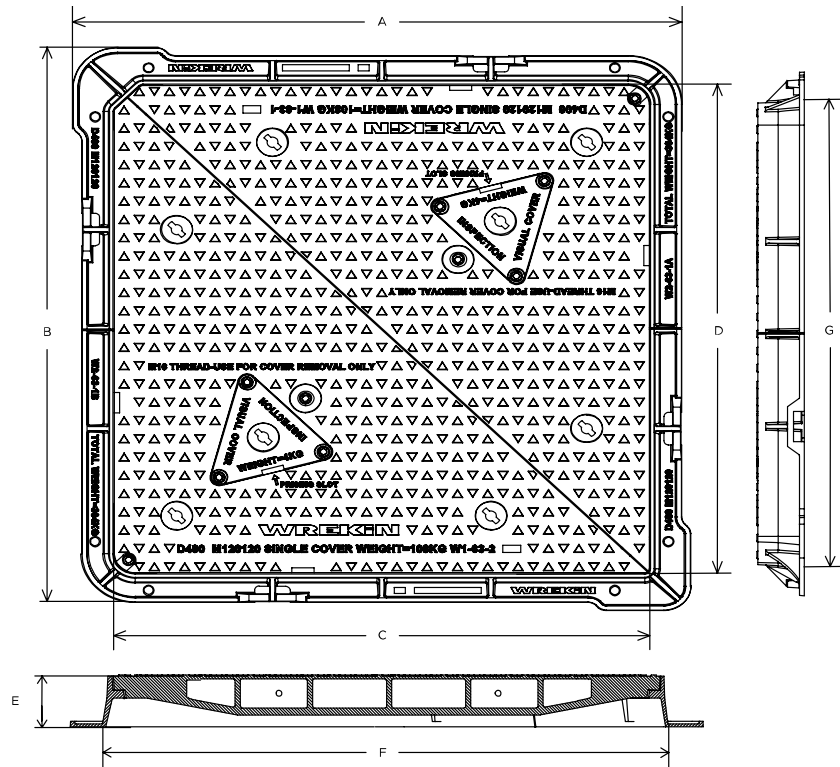
Hercules D400 manhole cover 1200mm x 1200mm clear opening with 150mm frame depth



RANGE	CLEAR OPENING (MM)	OVERALL FRAME (MM)	FRAME DEPTH (MM)	OPTIONS
Hercules	1,200 x 1,200	1,385 x 1,385	150	<input type="checkbox"/> Ventilation holes <input type="checkbox"/> Factory-applied badging <input type="checkbox"/> Seal plate <input type="checkbox"/> Safety grille <input type="checkbox"/> Screw locking

KEY FEATURES

- ✓ The covers feature a universal beam (also known as an I beam) providing significant improvements to rigidity, reducing seat wear for an enhanced service life.
- ✓ The enlarged frame corners help to dissipate loads onto the foundation, providing a longer service life and increased reliability.
- ✓ Inspection window allows safe and easy view into chamber.
- ✓ Safety keyway prevents accidental disengagement of the lifting key during the handling process.
- ✓ The high seating position ensures that forces are transmitted more directly downwards, meaning conversion of traffic loads into mortar-compatible compression forces.
- ✓ Indexed corners ensure correct orientation first time, every time.
- ✓ Mechanical lifting points are provided.
- ✓ 70+ PSRV tested at top surface of chequer by UKAS accredited 3rd party.



SPECIFICATION

General information

Stock code	DMTOD6/1212/4
Primary material	Ductile iron
Range	Hercules
Category	Manhole cover
Flanges	4

Standards, classes and groupings

Standards	BS EN 124-2
BS EN 124 Class	D400
BS EN 124 Group	4

Dimensions

Frame shape	Square
Manhole shape	Square
Overall frame (A x B)	1,385 mm x 1,385 mm
Clear opening (C x D)	1,200 mm x 1,200 mm
Frame depth (E)	150mm
Base opening (F x G)	1,230 mm x 1,230 mm

AVAILABLE OPTIONS

✓ Ventilation holes

Provide additional cover ventilation in addition to the product's natural ventilation, up to the BS EN 124 allowance.

✓ Low leak seal plate

Restricts the flow of surface water runoff into the chamber. Reducing the possibility of overwhelming the drainage system.

✓ Screw locking

Screw locking deters unauthorised access to the chamber. An extended shank socket set is required to engage the locking screw.

✓ ID badging and communications options

Bespoke badging and communications antennae, including NFC, RFID and IoT technology.

✓ Safety grille

Safety grilles prevent accidental chamber falls. Available in a variety of configurations; including bars and mesh as drop-in or hinged.

ACCESSORIES

STOCK CODE	DESCRIPTION
PC/UNIFORM/151076	Uniform chamber adjustment unit 760mm x 100mm x 15mm
PC/UNIFORM/251076	Uniform chamber adjustment unit 760mm x 100mm x 25mm
PC/UNIWEDGE/755012	Uniform support wedge 120mm x 50mm x 75mm

STOCK CODE	DESCRIPTION
YPCR/U12.5	12.5Kg Unipak® rapid curing polyester resin mortar
YPCR/U25	25Kg Unipak® rapid curing polyester resin mortar
SCREWLIFT	Manhole cover levelling system
GRITBLOCKER	Anti-blockage keyway insert
KEY/LONG	Large cover lifting keys with a long handle (sold as a pair)
KEYS/L	Small cover combined lifting key
KEYSHEAVY	Large cover lifting keys with a standard handle (sold as a pair)

NOTES

BS EN 124 and CD 534 apply to products with a clear opening up to 1 metre. The Hercules range of access covers have a clear opening greater than this, however load capability and design features exceed the requirements of these documents. Please note that Hercules 1,200 x 1,200mm cover is the only cover in the range to have keyholes for manual lifting. All values stated are nominal within 2.5% tolerance.

1. Wrekin Products Ltd is continually seeking to improve our products and therefore reserves the right to alter product specifications without prior notice.
2. It is the responsibility of all users to satisfy themselves the above data is current.
3. Installation details are available on request.
4. All Wrekin products are supplied subject to our [Terms and Conditions of Sale](#)

