

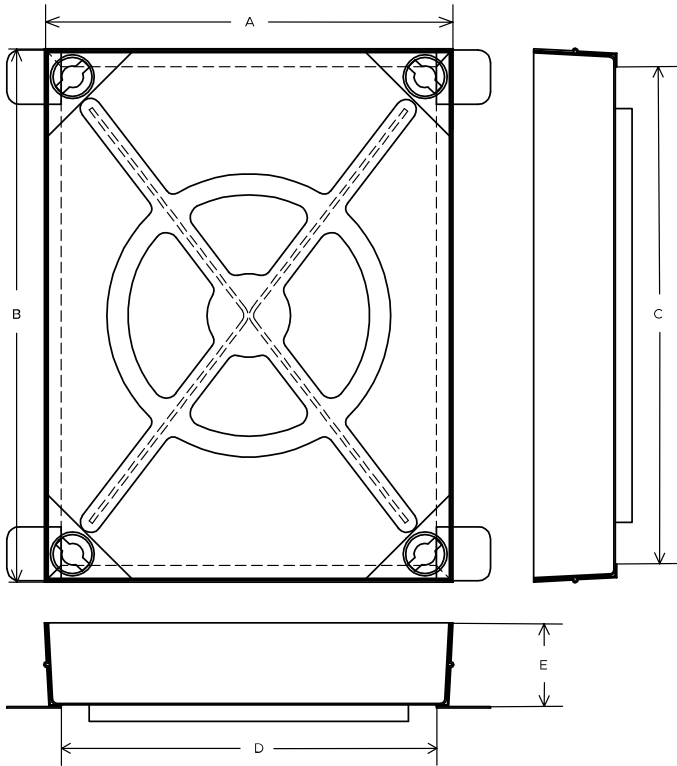
C292X/090090

Steel Block Paviour Access Cover, 900mm x 900mm clear opening,
100mm tray depth, Loading code X

CLEAR OPENING (MM)	OVERALL TOP OF FRAME (MM)	FRAME DEPTH (MM)	LOAD DUTY
900 x 900	990 x 990	110	Heavy duty

KEY FEATURES

- ✓ Hot dipped galvanised for corrosion resistance.
- ✓ Keyway lifting points are provided on the frame for safe handling.



SPECIFICATION

General information

Stock code	C292X/090090
Primary material	Steel
Category	Access cover
Flanges	4
Gross laden vehicle weight	44 tn
Load duty	Heavy duty
Number of lids	2
Slow moving wheel load (pneumatic tyres)	11.5

Standards, classes and groupings

Wrekin loading code	X
---------------------	---

Dimensions

Frame shape	Rectangular
Manhole shape	Rectangular
Overall top of frame (A x B)	990 mm x 990 mm
Clear opening (C x D)	900 mm x 900 mm
Frame depth (E)	110mm
Base opening (F x G)	
Overall base of frame	1,090 mm x 990 mm

ACCESSORIES

STOCK CODE	DESCRIPTION
KEYSHEAVY	Large cover lifting keys with a standard handle (sold as a pair)

1. Wrekin Products Ltd is continually seeking to improve our products and therefore reserves the right to alter product specifications without prior notice.
2. It is the responsibility of all users to satisfy themselves the above data is current.
3. Installation details are available on request.
4. All Wrekin products are supplied subject to our [Terms and Conditions of Sale](#)

