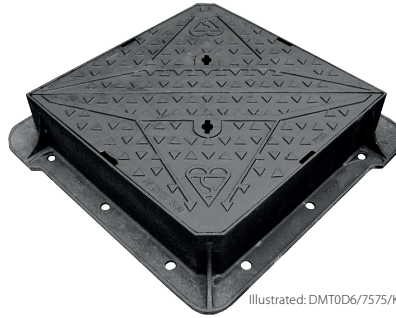









Highway 600x600x150mm

Ductile iron D400 double triangular access cover

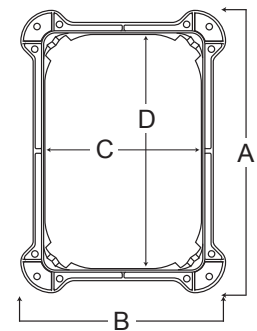
Designed and manufactured to meet the enhanced requirements of the Highways Agency's HA 104/09 specification this Highway access cover exceed BS EN 124:1994 requirements and include specific design features required by the Highways Agency.



Illustrated: DMT0D6/7575/KTHA

-  For use in a Group 4 Class D400 carriageway environment
-  Fully comply with BS EN 124:1994 and are Kitemarked by BSI
-  Complies fully with UK Highways Authority specification HA 104/09 with enlarged frame flanges and corners and the inclusion of lifting points
-  A patented safety keyway prevents accidental disengagement during the lifting operation. Also compatible with standard D400 lifting keys.
-  Patented frame design with enlarged frame corners that help dissipate load
-  Three point suspension on covers for non-rock stability
-  Manufactured from strong and highly durable ductile iron

Wrekin product code	Clear opening size (Cx D mm)	Frame depth (mm)	Over frame size (Ax B mm)
DMT0D6/6060/KTHA	600 x 600	150	800 x 800



1. Wrekin Products Ltd is continually seeking to improve our products and therefore reserves the right to alter product specifications without prior notice.
2. It is the responsibility of all users to satisfy themselves that the above data is current.
3. Wrekin cannot be held responsible for the performance of these products as conditions of use are beyond our control.
4. Installation details are available on request.