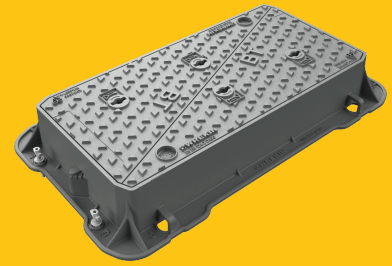


## 052998

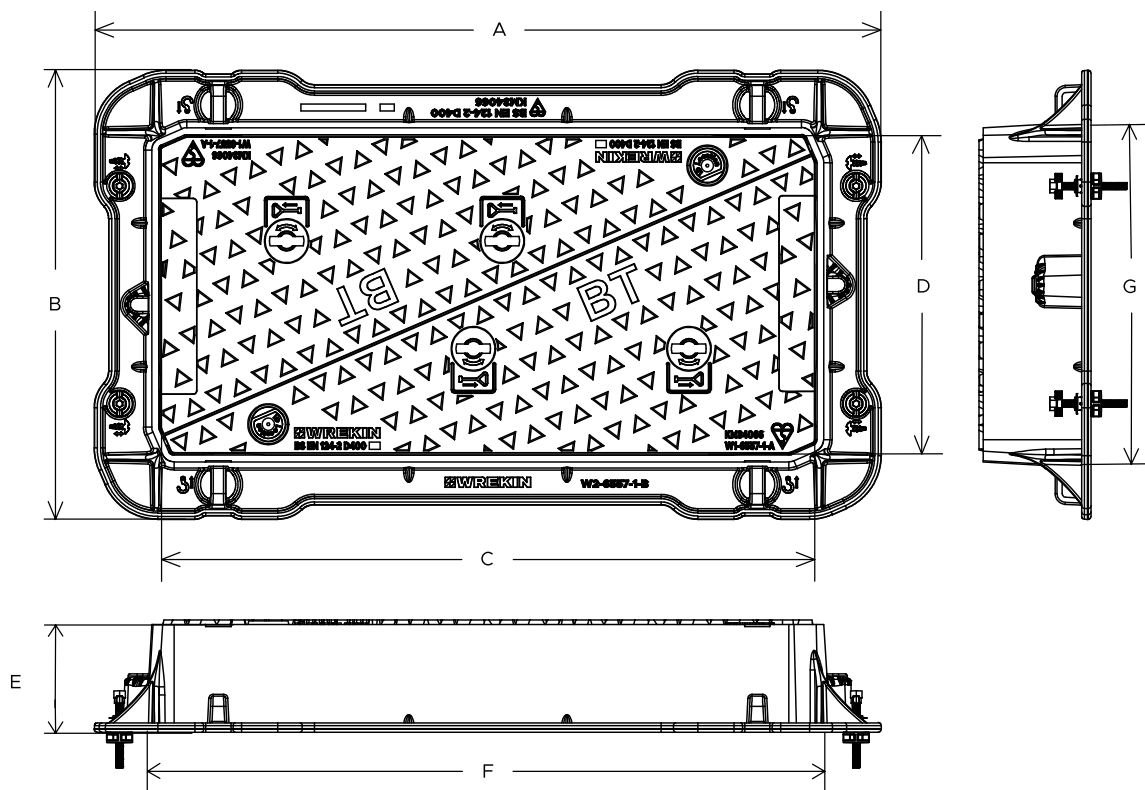
BT Openreach uncoated MHC&F D400 915mm x 445mm clear opening with 150mm frame depth, includes ScrewLift as standard, badged BT



RANGE	CLEAR OPENING (MM)	OVERALL FRAME (MM)	FRAME DEPTH (MM)	OPTIONS
Pulse	915 x 445	1,095 x 625	150	<input type="checkbox"/> Enhanced anti-slip coating <input type="checkbox"/> ID and comms badging <input type="checkbox"/> Standard badging <input type="checkbox"/> Pressure release holes

## FEATURES

- ✓ Non rocking 3-point suspension design, for silent operation.
- ✓ Meets the requirements of CD 534 v0.1.0 (formerly HA 104/09).
- ✓ Frame gussets are supports which reinforce the corners where the frame sections meet, distributing stress evenly, preventing damage to the frame or the access cover.
- ✓ Covers have been approved for use by telecommunications companies such as Openreach and Virgin Media.
- ✓ Safety keyway prevents accidental disengagement of the lifting key during the handling process.
- ✓ The covers feature a universal beam (also known as an I beam) providing significant improvements to rigidity, reducing seat wear for an enhanced service life.
- ✓ 70+ PSRV tested at top surface of chequer by UKAS accredited 3rd party.
- ✓ The enlarged frame corners help to dissipate loads onto the foundation, providing a longer service life and increased reliability.
- ✓ Mechanical lifting points are provided.
- ✓ A retrofittable ID badge can be fitted, also compatible with antennas and communication options (RFID, NFC, IoT)
- ✓ Surface texturing above and below the flange enables better mortar engagement, reducing any lateral movement which could result in cracking.



## SPECIFICATION

### General information

Stock code	052998
Primary material	Ductile iron
Range	Pulse
Category	Manhole cover
Flanges	4

### Standards, classes and groupings

Standards	BS EN 124-2 CD 534 (formerly HA 104/09) CD 534 v0.1.0 DMRB MCHW
-----------	---

**BS EN 124 Class**

D400

**BS EN 124 Group**

4

**Third party certified**

Kitemark

## Dimensions

**Frame shape**

Rectangular

**Manhole shape**

Rectangular

**Overall frame (A x B)**

1,095 mm x 625 mm

**Clear opening (C x D)**

915 mm x 445 mm

**Frame depth (E)**

150mm

**Base opening (F x G)**

940 mm x 470 mm

## AVAILABLE OPTIONS

### ✓ Enhanced anti-slip coating

An enhanced anti-slip coating provides increased anti-slip protection as an addition to the product's own anti-skid properties.

### ✓ Industry standard badging

Integral industry-standard badging e.g. SW (Storm Water) and FW (Foul Water). Details are taken at point of order.

### ✓ ID badging and communications options

Bespoke badging and communications antennae, including NFC, RFID and IoT technology.

### ✓ Pressure release holes

Pressure release holes provide additional airflow, with sizes permitted up to the maximum allowances specified in BS EN 124.

## ACCESSORIES

STOCK CODE	DESCRIPTION
PC/UNIWEDGE/755012	Uniform support wedge 120mm x 50mm x 75mm
KEY/LONG	Large cover lifting keys with a long handle (sold as a pair)
KEYS/LONG	Large cover lifting keys with a long handle
KEYS/HEAVY	Large cover lifting keys with a standard handle
KEYS/L	Small cover combined lifting key

STOCK CODE	DESCRIPTION
SCREWLIFT	Simple and rapid manhole frame levelling system. Simply push the bushes into the holes in the flange and adjust the levelling screws to the required height.

1. Wrekin Products Ltd is continually seeking to improve our products and therefore reserves the right to alter product specifications without prior notice.
2. It is the responsibility of all users to satisfy themselves the above data is current.
3. Installation details are available in the [knowledge base](#).
4. All Wrekin products are supplied subject to our [Terms and Conditions of Sale](#)

