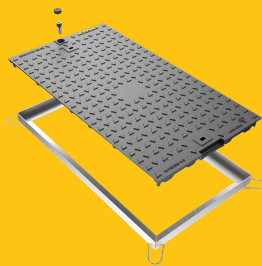


DMSOB2/9144/KGSF

JB4

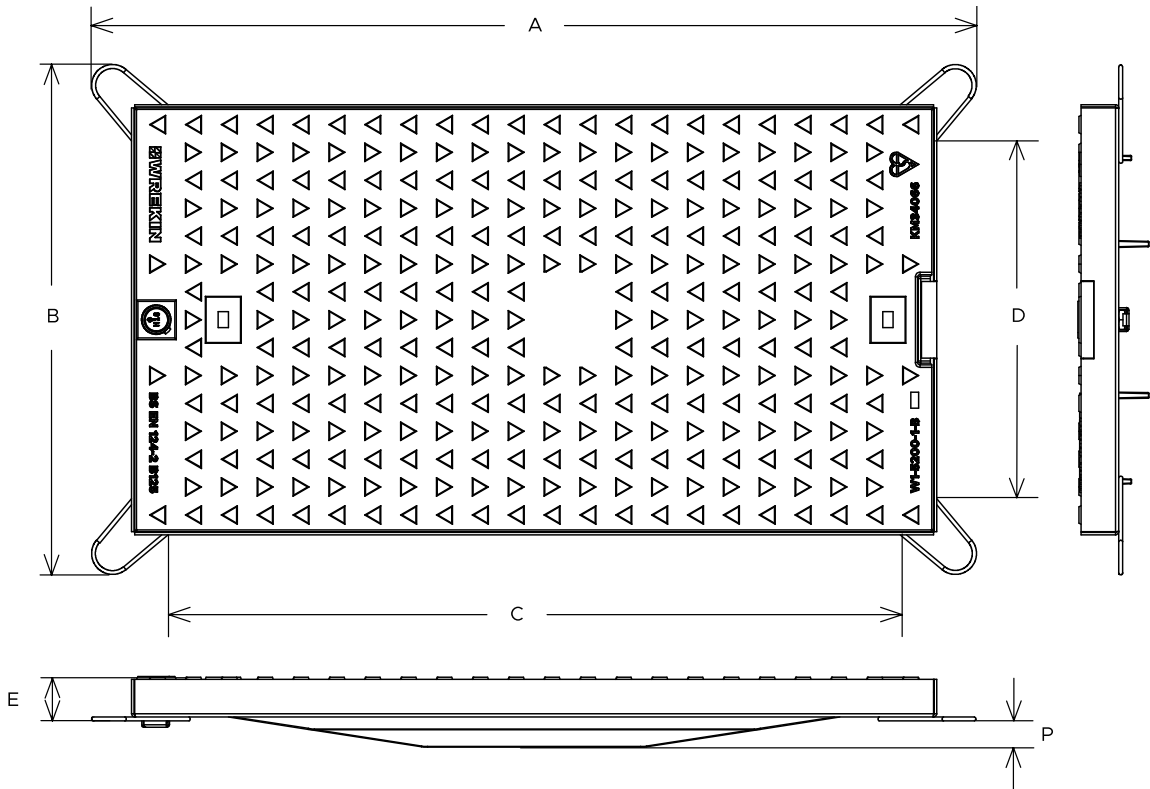


RANGE	CLEAR OPENING (MM)	OVERALL FRAME (MM)	FRAME DEPTH (MM)	OPTIONS
	915 x 445	1,110 x 640	50	<input type="checkbox"/> ID and comms badging

FEATURES

✓ 70+ PSRV tested at top surface of chequer by UKAS accredited 3rd party.

✓ Screw locking



## SPECIFICATION

### General information

Stock code	DMSOB2/9144/KGSF
Primary material	Ductile iron
Category	Manhole cover
Flanges	4

### Standards, classes and groupings

Standards	BS EN 124-2
BS EN 124 Class	B125
BS EN 124 Group	2
Third party certified	Kitemark

### Dimensions

Frame shape	Rectangular
Overall frame (A x B)	1,110 mm x 640 mm
Clear opening (C x D)	915 mm x 445 mm
Frame depth (E)	50mm

## AVAILABLE OPTIONS

- ✓ **ID badging and communications options**  
Bespoke badging and communications antennae, including NFC, RFID and IoT technology.

## NOTES

All values stated are nominal within 2.5% tolerance.

1. Wrekin Products Ltd is continually seeking to improve our products and therefore reserves the right to alter product specifications without prior notice.
2. It is the responsibility of all users to satisfy themselves the above data is current.
3. Installation details are available in the [knowledge base](#).
4. All Wrekin products are supplied subject to our [Terms and Conditions of Sale](#)

