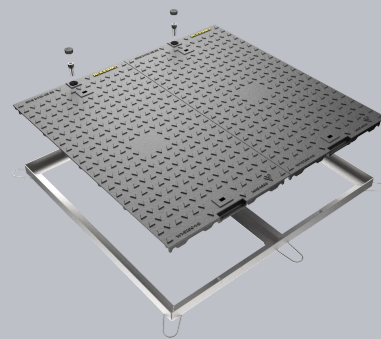
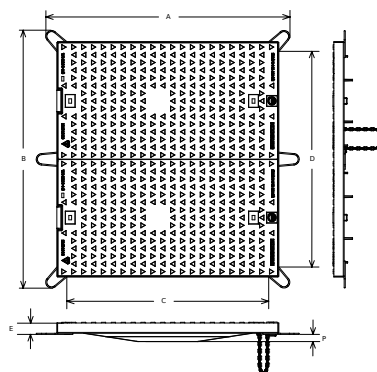


## DMSOB2/9791/KGSF

JB4A



CHARACTERISTIC	VALUE
Range	
Clear opening (mm)	915 x 975
Overall frame (mm)	1,195 x 1,170
Frame depth (mm)	50
Options	► Standard badging



## SPECIFICATION

### GENERAL INFORMATION

Stock code	DMSOB2/9791/KGSF
Primary material	Ductile iron
Category	Manhole cover
Flanges	4

### STANDARDS, CLASSES AND GROUPINGS

Standards	BS EN 124-2
BS EN 124 Class	B125
BS EN 124 Group	2
Third party certified	Kitemark

## FEATURES

✓ 70+ PSRV tested at top surface of chequer by UKAS accredited 3rd party.

✓ Screw locking

### DIMENSIONS

Frame shape	Rectangular
Overall frame (A x B)	1,195 mm x 1,170 mm
Clear opening (C x D)	915 mm x 975 mm
Frame depth (E)	50mm
Base opening (F x G)	915 mm x 975 mm

## AVAILABLE OPTIONS

### ✓ Industry standard badging

Integral industry-standard badging e.g. SW (Storm Water) and FW (Foul Water). Details are taken at point of order.

- ▶ Wrekin Products Ltd is continually seeking to improve our products and therefore reserves the right to alter product specifications without prior notice.
- ▶ It is the responsibility of all users to satisfy themselves the above data is current.
- ▶ All values stated are nominal within 2.5% tolerance.
- ▶ Installation details are available in the [knowledge base](#).
- ▶ All Wrekin products are supplied subject to our [Terms and Conditions of Sale](#).