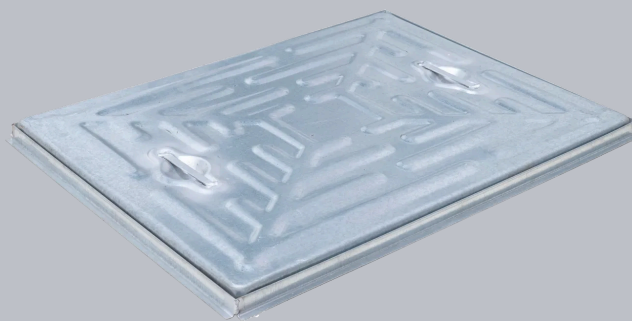


## C211 L/060045PSF

Pressed Steel Access Cover, 600mm x 450mm clear opening, 25mm depth, Loading code L



CHARACTERISTIC	VALUE
Clear opening (mm)	600 x 450
Overall top of frame (mm)	625 x 475
Frame depth (mm)	25
Load duty	Domestic light duty

## SPECIFICATION

### GENERAL INFORMATION

Stock code	C211L/060045PSF
Primary material	Steel
Category	Access cover
Flanges	4
Gross laden vehicle weight	5 tn
Load duty	Domestic light duty
Slow moving wheel load (pneumatic tyres)	1.25 tn
Seal type	Single seal

### STANDARDS, CLASSES AND GROUPINGS

Wrekin loading code	L
---------------------	---

### DIMENSIONS

Frame shape	Rectangular
Overall top of frame (A x B)	475 mm x 625 mm
Clear opening (C x D)	600 mm x 450 mm
Frame depth (E)	25mm

## FEATURES

- ✓ Hot dipped galvanised for corrosion resistance.
- ✓ Keyway lifting points are provided on the frame for safe handling.

- ✓ Lifting handle

- ▶ Wrekin Products Ltd is continually seeking to improve our products and therefore reserves the right to alter product specifications without prior notice.
- ▶ It is the responsibility of all users to satisfy themselves the above data is current.
- ▶ All values stated are nominal within 2.5% tolerance.
- ▶ Installation details are available in the [knowledge base](#).
- ▶ All Wrekin products are supplied subject to our [Terms and Conditions of Sale](#).

