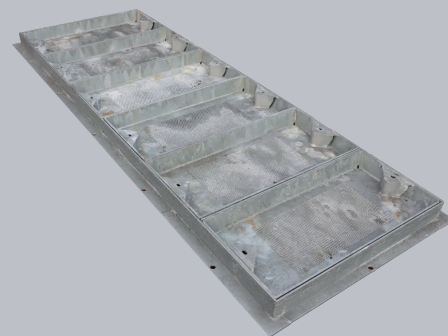


C236N/228071/BT

Recessed cover for block paving, 2285mm x 710mm clear opening, 86mm frame depth, Wrekin loading code N, BT Approved



| CHARACTERISTIC | VALUE |
|---------------------------|-------------|
| Clear opening (mm) | 2,285 x 710 |
| Overall top of frame (mm) | 2,360 x 783 |
| Frame depth (mm) | 86 |
| Load duty | |

SPECIFICATION

GENERAL INFORMATION

| | |
|------------------|-----------------|
| Stock code | C236N/228071/BT |
| Primary material | Steel |
| Category | Access cover |
| Flanges | 4 |
| Number of lids | 6 |
| Chamber ref | 10 |

STANDARDS, CLASSES AND GROUPINGS

| | |
|---------------------|------|
| BS EN 124 Class | B125 |
| Wrekin loading code | N |

DIMENSIONS

| | |
|------------------------------|-------------------|
| Frame shape | Rectangular |
| Overall top of frame (A x B) | 783 mm x 2,360 mm |
| Clear opening (C x D) | 2,285 mm x 710 mm |
| Frame depth (E) | 86mm |
| Overall base of frame | 870 mm x 2,445 mm |

FEATURES

- ✓ Designed with tapered sides and centralised lifting points to allow the cover to slide out of the frame.
- ✓ Hot dipped galvanised for corrosion resistance.
- ✓ Covers have been approved for use by telecommunications companies such as Openreach.
- ✓ Can be installed by a single person, providing labour cost savings.

- ▶ Wrekin Products Ltd is continually seeking to improve our products and therefore reserves the right to alter product specifications without prior notice.
- ▶ It is the responsibility of all users to satisfy themselves the above data is current.
- ▶ All values stated are nominal within 2.5% tolerance.
- ▶ Installation details are available in the [knowledge base](#).
- ▶ All Wrekin products are supplied subject to our [Terms and Conditions of Sale](#).

