

C291M/030030

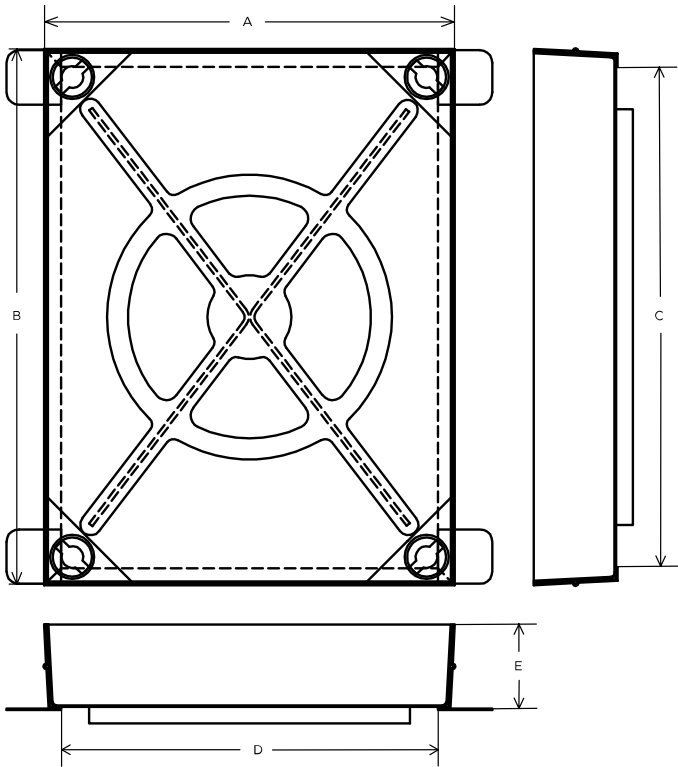
Steel Recessed Access Cover, 300mm x 300mm clear opening, 100mm tray depth, Loading code M



CLEAR OPENING (MM)	OVERALL TOP OF FRAME (MM)	FRAME DEPTH (MM)	LOAD DUTY
300 x 300	340 x 340	105	Light / medium duty

FEATURES

- ✓ Hot dipped galvanised for corrosion resistance.
- ✓ Keyway lifting points are provided on the frame for safe handling.



SPECIFICATION

General information

Stock code	C291M/030030
Primary material	Steel
Category	Access cover
Flanges	4
Gross laden vehicle weight	10 tn
Load duty	Light / medium duty
Slow moving wheel load (pneumatic tyres)	2.5

Standards, classes and groupings

Wrekin loading code	M
---------------------	---

Dimensions

Frame shape	Rectangular
Overall frame (A x B)	
Overall top of frame (A x B)	340 mm x 340 mm
Clear opening (C x D)	300 mm x 300 mm
Frame depth (E)	105mm
Base opening (F x G)	
Overall base of frame	440 mm x 340 mm

NOTES

Mild steel - Hot dip galvanised to BS EN ISO 1461

Lifting keys - Standard heavy-duty key (product code KEYSHEAVY)

1. Wrekin Products Ltd is continually seeking to improve our products and therefore reserves the right to alter product specifications without prior notice.
2. It is the responsibility of all users to satisfy themselves the above data is current.
3. Installation details are available on request.
4. All Wrekin products are supplied subject to our [Terms and Conditions of Sale](#)

