

**C291M/075060**

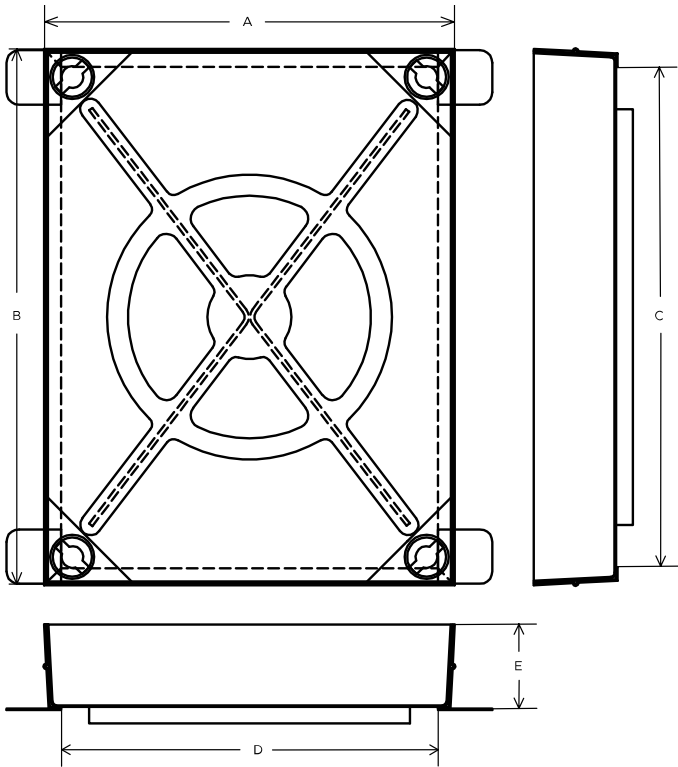
Steel Recessed Access Cover, 750mm x 600mm clear opening, 100mm tray depth, Loading code M



CLEAR OPENING (MM)	OVERALL TOP OF FRAME (MM)	FRAME DEPTH (MM)	LOAD DUTY
750 x 600	790 x 690	105	Light / medium duty

**FEATURES**

- ✓ Hot dipped galvanised for corrosion resistance.
- ✓ Keyway lifting points are provided on the frame for safe handling.



## SPECIFICATION

### General information

Stock code	C291M/075060
Primary material	Steel
Category	Access cover
Flanges	4
Gross laden vehicle weight	10 tn
Load duty	Light / medium duty
Slow moving wheel load (pneumatic tyres)	2.5

### Standards, classes and groupings

Wrekin loading code	M
---------------------	---

### Dimensions

Frame shape	Rectangular
Overall frame (A x B)	
Overall top of frame (A x B)	690 mm x 790 mm
Clear opening (C x D)	750 mm x 600 mm
Frame depth (E)	105mm
Base opening (F x G)	
Overall base of frame	740 mm x 790 mm

## NOTES

Mild steel - Hot dip galvanised to BS EN ISO 1461

Lifting keys - Standard heavy-duty key (product code KEYSHEAVY)

1. Wrekin Products Ltd is continually seeking to improve our products and therefore reserves the right to alter product specifications without prior notice.
2. It is the responsibility of all users to satisfy themselves the above data is current.
3. Installation details are available on request.
4. All Wrekin products are supplied subject to our [Terms and Conditions of Sale](#)

