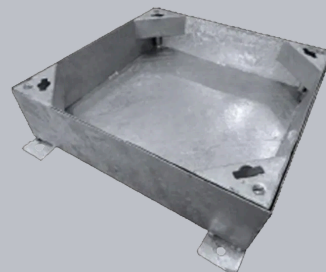
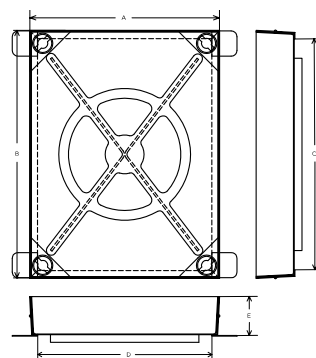


C291M/090060

Steel Recessed Access Cover, 900mm x 600mm clear opening, 100mm tray depth, Loading code M



CHARACTERISTIC	VALUE
Clear opening (mm)	900 x 600
Overall top of frame (mm)	940 x 640
Frame depth (mm)	105
Load duty	Light / medium duty



SPECIFICATION

GENERAL INFORMATION

Stock code	C291M/090060
Primary material	Steel
Category	Access cover
Flanges	4
Gross laden vehicle weight	10 tn
Load duty	Light / medium duty
Slow moving wheel load (pneumatic tyres)	2.5

STANDARDS, CLASSES AND GROUPINGS

Wrekin loading code	M
---------------------	---

DIMENSIONS

Frame shape	Rectangular
Overall top of frame (A x B)	640 mm x 940 mm
Clear opening (C x D)	900 mm x 600 mm
Frame depth (E)	105mm
Overall base of frame	740 mm x 940 mm

FEATURES

✓ Hot dipped galvanised for corrosion resistance.

✓ Keyway lifting points are provided on the frame for safe handling.

NOTES

Mild steel - Hot dip galvanised to BS EN ISO 1461

Lifting keys - Standard heavy-duty key (product code KEYSHEAVY)

- ▶ Wrekin Products Ltd is continually seeking to improve our products and therefore reserves the right to alter product specifications without prior notice.
- ▶ It is the responsibility of all users to satisfy themselves the above data is current.
- ▶ All values stated are nominal within 2.5% tolerance.
- ▶ Installation details are available in the [knowledge base](#).
- ▶ All Wrekin products are supplied subject to our [Terms and Conditions of Sale](#).

Tel: 01543 440 440
Fax: 01543 440 444
info@wrekinproducts.com
wrekinproducts.com

