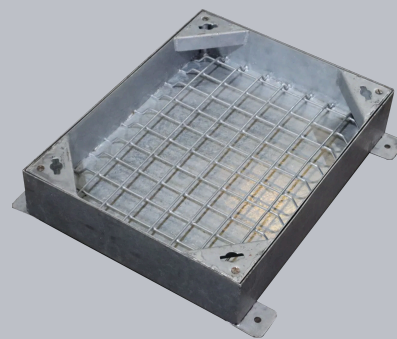


C291 X/060045/TR

Steel Recessed Access Cover, double seal, 600mm x 450mm clear opening, 131mm tray depth, Loading code X



CHARACTERISTIC	VALUE
Clear opening (mm)	600 x 450
Overall top of frame (mm)	656 x 600
Frame depth (mm)	131
Load duty	Heavy duty

SPECIFICATION

GENERAL INFORMATION

Stock code	C291X/060045/TR
Primary material	Steel
Category	Access cover
Flanges	4
Gross laden vehicle weight	44 tn
Load duty	Heavy duty
Slow moving wheel load (pneumatic tyres)	11.5
Seal type	Double seal

STANDARDS, CLASSES AND GROUPINGS

Wrekin loading code	X
---------------------	---

DIMENSIONS

Frame shape	Rectangular
Overall top of frame (A x B)	600 mm x 656 mm
Clear opening (C x D)	600 mm x 450 mm
Frame depth (E)	131mm

FEATURES

- ✓ Hot dipped galvanised for corrosion resistance.

NOTES

Full loading capability is achieved when fully filled with grade C25 concrete

Mild steel - Galvanised to BS EN ISO 1461

Locking screws - Countersunk, slotted, M8 x 120 mm long (2 per product)

Unlocking - Flathead screwdriver

Lifting key - Standard heavy duty (Wrekin product code KEYSHEAVY)

- ▶ Wrekin Products Ltd is continually seeking to improve our products and therefore reserves the right to alter product specifications without prior notice.
- ▶ It is the responsibility of all users to satisfy themselves the above data is current.
- ▶ All values stated are nominal within 2.5% tolerance.
- ▶ Installation details are available in the [knowledge base](#).
- ▶ All Wrekin products are supplied subject to our [Terms and Conditions of Sale](#).

