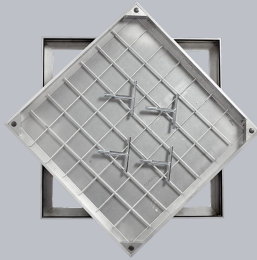


**CALPRO80N/075075 (discontinued)**

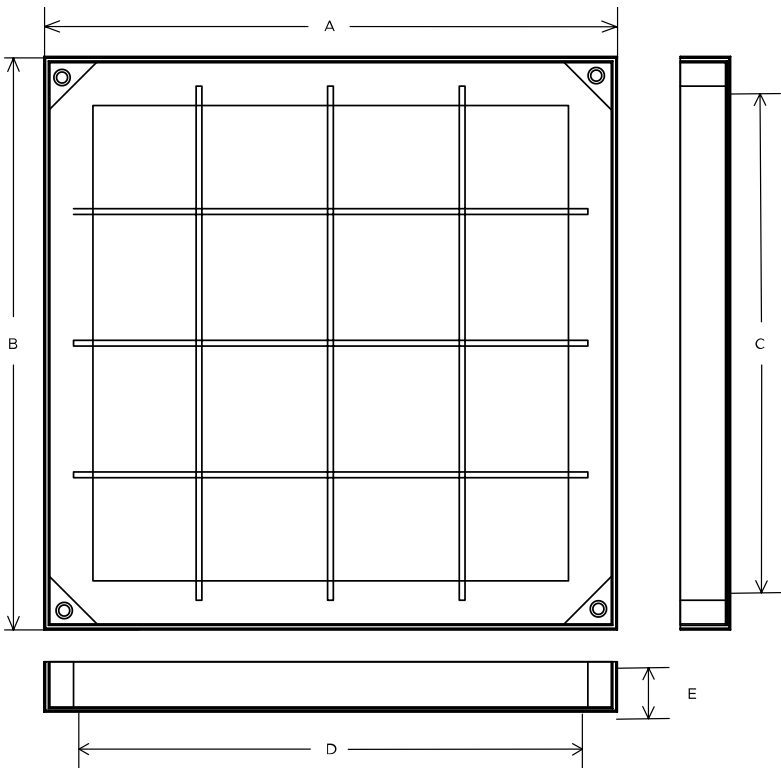
Aluminium Recessed Access Cover, 750mm x 750mm clear opening, 65mm tray depth, 80mm frame depth, Loading code N



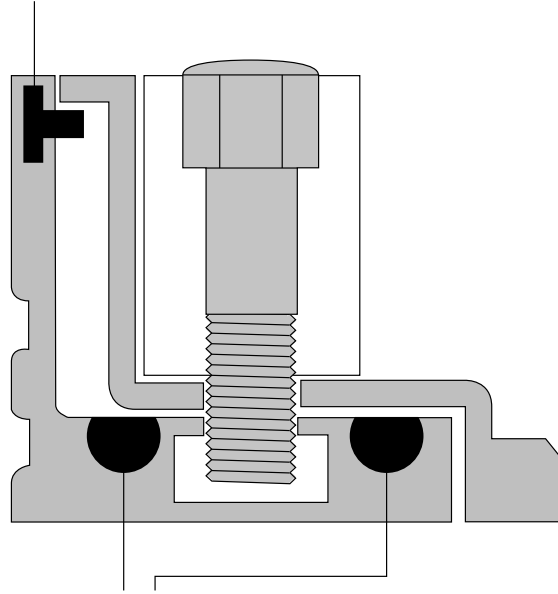
CLEAR OPENING (MM)	OVERALL TOP OF FRAME (MM)	FRAME DEPTH (MM)	LOAD DUTY
750 x 750	840 x 840	80	Medium duty

**SUPERSEDED BY**

STOCK CODE	CLEAR OPENING (MM)	OVERALL TOP OF FRAME (MM)	FRAME DEPTH (MM)	LOAD DUTY
CALPRO60N/075075	750 x 750	840 x 840	60	Medium duty



EPDM T Gasket



2x EPDM 8mm Gaskets

## SPECIFICATION

### General information

Stock code	CALPRO80N/075075
Primary material	Aluminium
Category	Access cover
Flanges	4
Gross laden vehicle weight	25 tn
Load duty	Medium duty
Slow moving wheel load (pneumatic tyres)	5 tn
Seal type	Triple seal

## Standards, classes and groupings

Wrekin loading code N

## Dimensions

Overall frame (A x B)

Overall top of frame (A x B)

840 mm x 840 mm

Clear opening (C x D)

750 mm x 750 mm

Frame depth (E)

80mm

Base opening (F x G)

1. Wrekin Products Ltd is continually seeking to improve our products and therefore reserves the right to alter product specifications without prior notice.
2. It is the responsibility of all users to satisfy themselves the above data is current.
3. Installation details are available on request.
4. All Wrekin products are supplied subject to our [Terms and Conditions of Sale](#)

