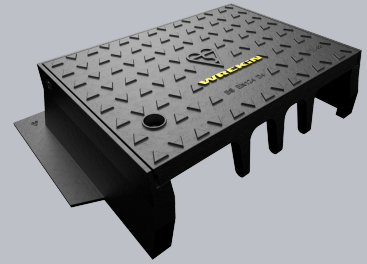


## DGK115/HB/K (discontinued)

D400 4 flange kerb unit 495mm x 345mm clear opening with 150mm frame depth



RANGE	CLEAR OPENING (MM)	OVERALL FRAME (MM)	FRAME DEPTH (MM)	OPTIONS
	495 x 345	645 x 445	150	<input type="checkbox"/> Screw locking

## SUPERSEDED BY

STOCK CODE	RANGE	CLEAR OPENING (MM)	OVERALL FRAME (MM)	FRAME DEPTH (MM)
DGK115/HB/KG	H2GO	440 x 305	645 x 445	150

## FEATURES

- ✓ Captive hinges reduce theft risk whilst allowing easy lifting.

## SPECIFICATION

### General information

Stock code	DGK115/HB/K
Primary material	Ductile iron
Category	Kerb unit
Flanges	4

## Standards, classes and groupings

Standards	BS EN 124-2
BS EN 124 Class	D400
BS EN 124 Group	3
Third party certified	Kitemark

## Dimensions

Frame shape	Rectangular
Manhole shape	Rectangular
Overall frame (A x B)	645 mm x 445 mm
Clear opening (C x D)	495 mm x 345 mm
Frame depth (E)	150mm
Base opening (F x G)	530 mm x 365 mm

## AVAILABLE OPTIONS

### ✓ Screw locking

Screw locking deters unauthorised access to the chamber. An extended shank socket set is required to engage the locking screw.

## ACCESSORIES

STOCK CODE	DESCRIPTION
PC/UNIFORM/151076	Uniform chamber adjustment unit 760mm x 100mm x 15mm
PC/UNIFORM/251076	Uniform chamber adjustment unit 760mm x 100mm x 25mm
PC/UNIWEDGE/755012	Uniform support wedge 120mm x 50mm x 75mm
YPCR/U12.5	12.5Kg Unipak® rapid curing polyester resin mortar

STOCK CODE	DESCRIPTION
YPCR/U25	25Kg Unipak <sup>®</sup> rapid curing polyester resin mortar

## NOTES

All values stated are nominal within 2.5% tolerance.

1. Wrekin Products Ltd is continually seeking to improve our products and therefore reserves the right to alter product specifications without prior notice.
2. It is the responsibility of all users to satisfy themselves the above data is current.
3. Installation details are available on request.
4. All Wrekin products are supplied subject to our [Terms and Conditions of Sale](#)

