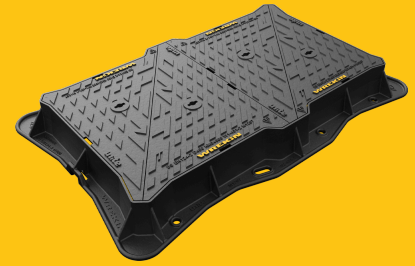


## DMTOD6/1267/KU

Unite D400 manhole cover 1220mm x 675mm clear opening with 150mm frame depth



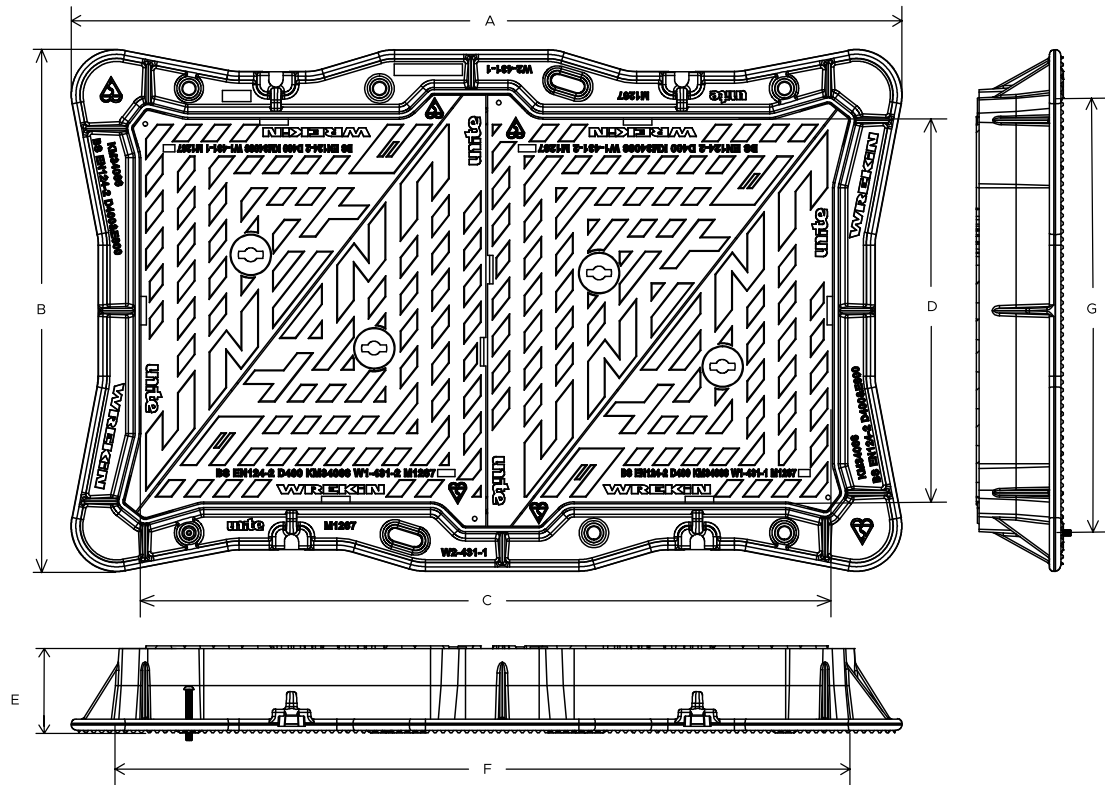
RANGE	CLEAR OPENING (MM)	OVERALL FRAME (MM)	FRAME DEPTH (MM)	OPTIONS
Unite	1,220 x 675	1,465 x 920	150	<input type="checkbox"/> Flood and odour control plate <input type="checkbox"/> Safety grille <input type="checkbox"/> Screw locking <input type="checkbox"/> Standard badging <input type="checkbox"/> Pressure relief holes

## FEATURES

- ✓ GritBlocker™ anti-blockage keyway insert comes pre-installed.
- ✓ Safety keyway prevents accidental disengagement of the lifting key during the handling process.
- ✓ Unite is available with a 10 year warranty (subject to terms).
- ✓ Meets the requirements of CD 534 v0.1.0 (formerly HA 104/09).
- ✓ The covers feature a universal beam (also known as an I beam) providing significant improvements to rigidity, reducing seat wear for an enhanced service life.
- ✓ Frame gussets are supports which reinforce the corners where the frame sections meet, distributing stress evenly, preventing damage to the frame or the access cover.
- ✓ Unlike sharp, square-edged frames, rounded edges reduce stress concentrations and minimise crack formation.
- ✓ The enlarged frame corners help to dissipate loads onto the foundation, providing a longer service life and increased reliability.
- ✓ 70+ PSRV tested at top surface of chequer by UKAS accredited 3rd party.
- ✓ The high seating position ensures that forces are transmitted more directly downwards, meaning conversion of traffic loads into mortar-compatible compression forces.
- ✓ Indexed corners ensure correct orientation first time, every time.
- ✓ Non rocking 3-point suspension design, for silent operation.
- ✓ Holes in the frame flange where mortar can pass between the underside and top side, creating an interlock, providing greater strength.
- ✓ Keyway lifting points are provided on the frame for safe handling.

✓ Mechanical lifting points are provided.

✓ Surface texturing above and below the flange enables better mortar engagement, reducing any lateral movement which could result in cracking.



## SPECIFICATION

### General information

Stock code	DMTOD6/1267/KU
Primary material	Ductile iron
Range	Unite
Category	Manhole cover
Flanges	4

## Standards, classes and groupings

<b>Standards</b>	BS EN 124-2 BS7903 DMRB MCHW CD 534 v0.1.0
<b>BS EN 124 Class</b>	D400
<b>BS EN 124 Group</b>	4
<b>Third party certified</b>	Kitemark

## Dimensions

<b>Frame shape</b>	Rectangular
<b>Manhole shape</b>	Rectangular
<b>Overall frame (A x B)</b>	1,465 mm x 920 mm
<b>Clear opening (C x D)</b>	1,220 mm x 675 mm
<b>Frame depth (E)</b>	150mm
<b>Base opening (F x G)</b>	1,250 mm x 710 mm

## AVAILABLE OPTIONS

### ✓ Flood and odour control plate

The flood and odour control plate is manufactured from steel and provides resistance to flood-water ingress and the chamber-odour egress.

### ✓ Screw locking

Screw locking deters unauthorised access to the chamber. An extended shank socket set is required to engage the locking screw.

### ✓ Pressure relief holes

Pressure relief holes provide additional airflow, with sizes permitted up to the maximum allowances specified in BS EN 124.

### ✓ Safety grille

Safety grilles prevent accidental chamber falls. Available in a variety of configurations; including bars and mesh as drop-in or hinged.

### ✓ Industry standard badging

Integral industry-standard badging e.g. SW (Storm Water) and FW (Foul Water). Details are taken at point of order.

## ACCESSORIES

STOCK CODE	DESCRIPTION
PC/UNIFORM/151076	Uniform chamber adjustment unit 760mm x 100mm x 15mm
PC/UNIFORM/251076	Uniform chamber adjustment unit 760mm x 100mm x 25mm
PC/UNIWEDGE/755012	Uniform support wedge 120mm x 50mm x 75mm
YPCR/U12.5	12.5Kg Unipak <sup>®</sup> rapid curing polyester resin mortar
YPCR/U25	25Kg Unipak <sup>®</sup> rapid curing polyester resin mortar
SCREWLIFT	Simple and rapid manhole frame levelling system. Simply push the bushes into the holes in the flange and adjust the levelling screws to the required height.
KEY/LONG	Large cover lifting keys with a long handle (sold as a pair)
KEYS/L	Small cover combined lifting key

## NOTES

- Please note, this product is only compatible with our factory fitted flood and odour control plate. The retrofittable seal plate will only work with stock codes ending "/KUE".
- All values stated are nominal within 2.5% tolerance.

1. Wrekin Products Ltd is continually seeking to improve our products and therefore reserves the right to alter product specifications without prior notice.
2. It is the responsibility of all users to satisfy themselves the above data is current.
3. Installation details are available in the [knowledge base](#).
4. All Wrekin products are supplied subject to our [Terms and Conditions of Sale](#)