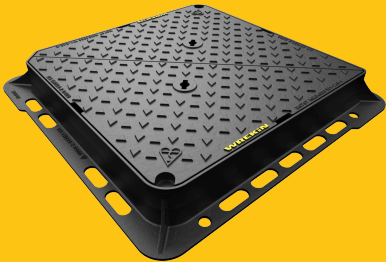


**DMTOD4/6767/KT**

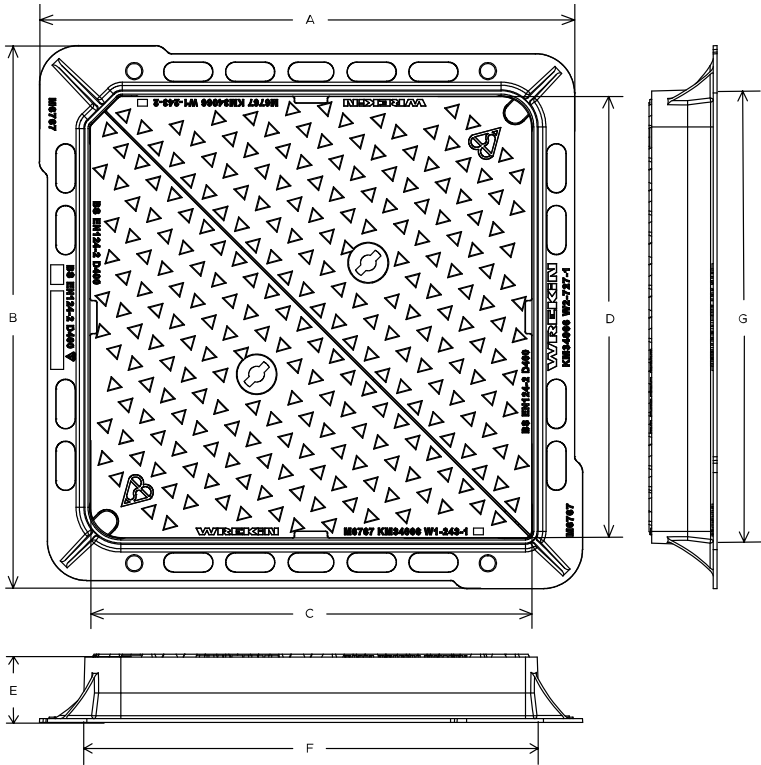
Tristar D400 manhole cover 675mm x 675mm clear opening with 100mm frame depth



RANGE	CLEAR OPENING (MM)	OVERALL FRAME (MM)	FRAME DEPTH (MM)	OPTIONS
Tristar	675 x 675	830 x 830	100	<input type="checkbox"/> Screw locking <input type="checkbox"/> Standard badging <input type="checkbox"/> Flood and odour control plate <input type="checkbox"/> Pressure relief holes

**FEATURES**

- ✓ The enlarged frame corners help to dissipate loads onto the foundation, providing a longer service life and increased reliability.
- ✓ Indexed corners ensure correct orientation first time, every time.
- ✓ Safety keyway prevents accidental disengagement of the lifting key during the handling process.
- ✓ 70+ PSRV tested at top surface of chequer by UKAS accredited 3rd party.



# SPECIFICATION

## General information

Stock code	DMTOD4/6767/KT
Primary material	Ductile iron
Range	Tristar
Category	Manhole cover
Flanges	4

## Standards, classes and groupings

Standards	BS EN 124-2
BS EN 124 Class	D400
BS EN 124 Group	4
Third party certified	Kitemark

## Dimensions

Frame shape	Square
Manhole shape	Square
Overall frame (A x B)	830 mm x 830 mm
Clear opening (C x D)	675 mm x 675 mm
Frame depth (E)	100mm
Base opening (F x G)	700 mm x 700 mm

## AVAILABLE OPTIONS

### ✓ Screw locking

Screw locking deters unauthorised access to the chamber. An extended shank socket set is required to engage the locking screw.

### ✓ Flood and odour control plate

The flood and odour control plate is manufactured from steel and provides resistance to flood-water ingress and the chamber-odour egress.

### ✓ Industry standard badging

Integral industry-standard badging e.g. SW (Storm Water) and FW (Foul Water). Details are taken at point of order.

### ✓ Pressure relief holes

Pressure relief holes provide additional airflow, with sizes permitted up to the maximum allowances specified in BS EN 124.

## ACCESSORIES

STOCK CODE	DESCRIPTION
PC/UNIFORM/151076	Uniform chamber adjustment unit 760mm x 100mm x 15mm
PC/UNIFORM/251076	Uniform chamber adjustment unit 760mm x 100mm x 25mm
PC/UNIWEDGE/755012	Uniform support wedge 120mm x 50mm x 75mm
YPCR/U12.5	12.5Kg Unipak <sup>®</sup> rapid curing polyester resin mortar
YPCR/U25	25Kg Unipak <sup>®</sup> rapid curing polyester resin mortar
GRITBLOCKER	Anti-blockage keyway insert
SCREWLIFT	Simple and rapid manhole frame levelling system. Simply push the bushes into the holes in the flange and adjust the levelling screws to the required height.
KEY/LONG	Large cover lifting keys with a long handle (sold as a pair)
KEYS/L	Small cover combined lifting key
CLICKLIFT6730	Clicklift manhole cover frame raising system 675 x 675 x 30mm
CLICKLIFT6740	Clicklift manhole cover frame raising system 675 x 675 x 40mm

STOCK CODE	DESCRIPTION
CLICKLIFT6750	Clicklift manhole cover frame raising system 675 x 675 x 50mm
CLICKLIFT6760	Clicklift manhole cover frame raising system 675 x 675 x 60mm
ARMMSHELL/6767	Armadillo manhole cover protector shell 690mm x 690mm (compatible with Tristar and Highway D400 675mm x 675mm manhole covers)

## NOTES

The use of Armadillo is recommended where exposure to construction site traffic is likely All values stated are nominal within 2.5% tolerance.

1. Wrekin Products Ltd is continually seeking to improve our products and therefore reserves the right to alter product specifications without prior notice.
2. It is the responsibility of all users to satisfy themselves the above data is current.
3. Installation details are available in the [knowledge base](#).
4. All Wrekin products are supplied subject to our [Terms and Conditions of Sale](#)

