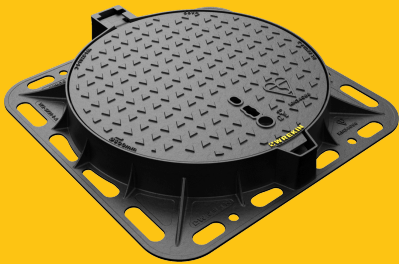


DMS1D4/60D/KTSF

Tristar D400 square frame to round manhole cover, 600mm diameter clear opening with 100mm frame depth



RANGE	CLEAR OPENING (MM)	OVERALL FRAME (MM)	FRAME DEPTH (MM)	OPTIONS
Tristar	Ø 605	790 x 790	100	<div><input type="checkbox"/> Screw locking</div> <div><input type="checkbox"/> Standard badging</div> <div><input type="checkbox"/> Pressure release holes</div> <div><input type="checkbox"/> Flood and odour control plate</div> <div><input type="checkbox"/> Enhanced anti-slip coating</div> <div><input type="checkbox"/> ID and comms badging</div>

FEATURES

- ✓

The enlarged frame corners help to dissipate loads onto the foundation, providing a longer service life and increased reliability.
- ✓

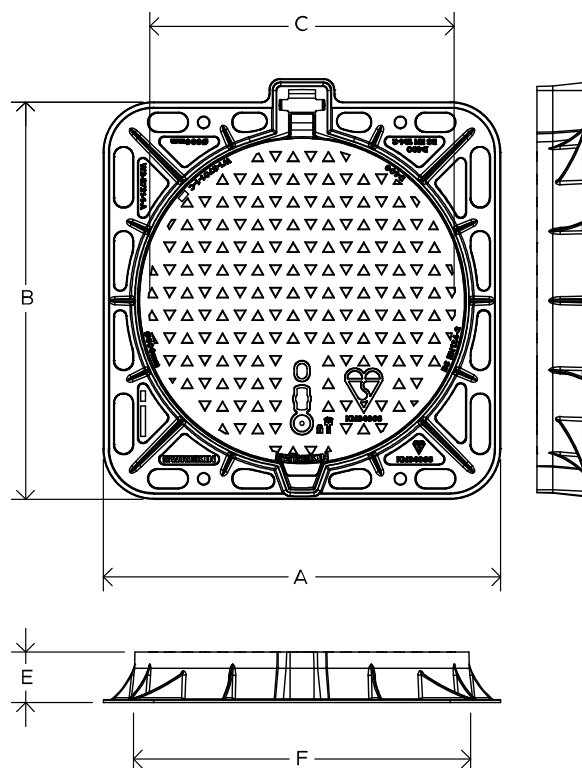
Safety keyway prevents accidental disengagement of the lifting key during the handling process.
- ✓

Spring bar low security locking feature.
- ✓

Indexed corners ensure correct orientation first time, every time.
- ✓

Safety-stop hinges prevent covers from falling once opened.
- ✓

70+ PSRV tested at top surface of chequer by UKAS accredited 3rd party.



SPECIFICATION

General information

Stock code	DMS1D4/60D/KTSF
Primary material	Ductile iron
Range	Tristar
Category	Manhole cover
Flanges	4

Standards, classes and groupings

Standards	BS EN 124-2
BS EN 124 Class	D400
BS EN 124 Group	4

Third party certified

Kitemark

Dimensions

Frame shape

Square

Manhole shape

Circular

Overall frame (A x B)

790 mm x 790 mm

Clear opening (C x D)

Ø 605 mm

Frame depth (E)

100mm

Base opening (F x G)

Ø 670 mm

AVAILABLE OPTIONS

✓ Screw locking

Screw locking deters unauthorised access to the chamber. An extended shank socket set is required to engage the locking screw.

✓ Pressure release holes

Pressure release holes provide additional airflow, with sizes permitted up to the maximum allowances specified in BS EN 124.

✓ Enhanced anti-slip coating

An enhanced anti-slip coating provides increased anti-slip protection as an addition to the product's own anti-skid properties.

✓ Industry standard badging

Integral industry-standard badging e.g. SW (Storm Water) and FW (Foul Water). Details are taken at point of order.

✓ Flood and odour control plate

The flood and odour control plate is manufactured from steel and provides resistance to flood-water ingress and the chamber-odour egress.

✓ ID badging and communications options

Bespoke badging and communications antennae, including NFC, RFID and IoT technology.

ACCESSORIES

STOCK CODE	DESCRIPTION
PC/UNIFORM/151076	Uniform chamber adjustment unit 760mm x 100mm x 15mm
PC/UNIFORM/251076	Uniform chamber adjustment unit 760mm x 100mm x 25mm
PC/UNIWEDGE/755012	Uniform support wedge 120mm x 50mm x 75mm
YPCR/U12.5	12.5Kg Unipak [®] rapid curing polyester resin mortar

STOCK CODE	DESCRIPTION
YPCR/U25	25Kg Unipak [®] rapid curing polyester resin mortar
GRITBLOCKER	Anti-blockage keyway insert
SCREWLIFT	Simple and rapid manhole frame levelling system. Simply push the bushes into the holes in the flange and adjust the levelling screws to the required height.
KEY/LONG	Large cover lifting keys with a long handle (sold as a pair)
KEYS/L	Small cover combined lifting key

NOTES

The use of Armadillo is recommended where exposure to construction site traffic is likely All values stated are nominal within 2.5% tolerance.

1. Wrekin Products Ltd is continually seeking to improve our products and therefore reserves the right to alter product specifications without prior notice.
2. It is the responsibility of all users to satisfy themselves the above data is current.
3. Installation details are available on request.
4. All Wrekin products are supplied subject to our [Terms and Conditions of Sale](#)

