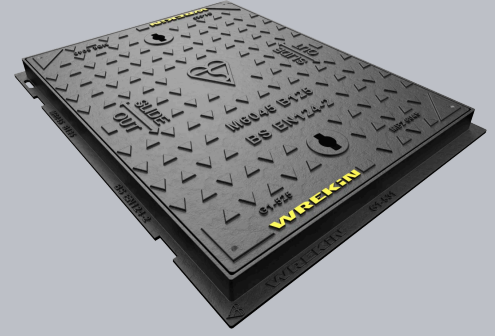
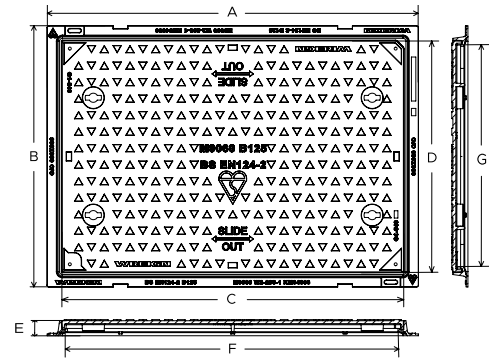


DMS1B2/6045/K

Safeseal B125 manhole cover 600mm x 450mm clear opening with 40mm frame depth



| CHARACTERISTIC | VALUE |
|--------------------|---|
| Range | Safeseal |
| Clear opening (mm) | 600 x 450 |
| Overall frame (mm) | 700 x 550 |
| Frame depth (mm) | 40 |
| Options | <ul style="list-style-type: none"> ► Screw locking ► Neoprene seal ► Standard badging ► Safety grille ► Flood and odour control plate ► Pressure relief holes |



SPECIFICATION

GENERAL INFORMATION

| | |
|------------------|---------------|
| Stock code | DMS1B2/6045/K |
| Primary material | Ductile iron |
| Range | Safeseal |
| Category | Manhole cover |
| Flanges | 4 |

STANDARDS, CLASSES AND GROUPINGS

| | |
|-----------------------|-------------|
| Standards | BS EN 124-2 |
| BS EN 124 Class | B125 |
| BS EN 124 Group | 2 |
| Third party certified | Kitemark |

DIMENSIONS

| | |
|-----------------------|-----------------|
| Frame shape | Rectangular |
| Manhole shape | Rectangular |
| Overall frame (A x B) | 700 mm x 550 mm |
| Clear opening (C x D) | 600 mm x 450 mm |
| Frame depth (E) | 40mm |
| Base opening (F x G) | 650 mm x 500 mm |

EPD DATA

| |
|--|
| Total life cycle (cradle to grave) 52.85 kg CO ₂ equivalent |
|--|



FEATURES

Tel: 01543 440 440
Fax: 01543 440 444
info@wrekinproducts.com
wrekinproducts.com



- ✓ Labyrinth seal helps to prevent odour escapes and water ingress.
- ✓ Safety keyway prevents accidental disengagement of the lifting key during the handling process.
- ✓ 70+ PSRV tested at top surface of chequer by UKAS accredited 3rd party.
- ✓ Designed with tapered sides and centralised lifting points to allow the cover to slide out of the frame.
- ✓ Indexed corners ensure correct orientation first time, every time.

AVAILABLE OPTIONS

- ✓ **Screw locking**
Screw locking deters unauthorised access to the chamber. An extended shank socket set is required to engage the locking screw.
- ✓ **Neoprene seal**
A neoprene seal can be included to reduce ingress and egress of dirt and gasses from the chamber.
- ✓ **Industry standard badging**
Integral industry-standard badging e.g. SW (Storm Water) and FW (Foul Water). Details are taken at point of order.
- ✓ **Safety grille**
Safety grilles prevent accidental chamber falls. Available in a variety of configurations; including bars and mesh as drop-in or hinged.
- ✓ **Flood and odour control plate**
The flood and odour control plate is manufactured from steel and provides resistance to flood-water ingress and the chamber-odour egress.
- ✓ **Pressure relief holes**
Pressure relief holes provide additional airflow, with sizes permitted up to the maximum allowances specified in BS EN 124.

ACCESSORIES

| STOCK CODE | DESCRIPTION |
|--------------------|--|
| PC/UNIFORM/151076 | Uniform chamber adjustment unit 760mm x 100mm x 15mm |
| PC/UNIFORM/251076 | Uniform chamber adjustment unit 760mm x 100mm x 25mm |
| PC/UNIWEDGE/755012 | Uniform support wedge 120mm x 50mm x 75mm |
| YPCR/U12.5 | 12.5Kg Unipak® rapid curing polyester resin mortar |
| YPCR/U25 | 25Kg Unipak® rapid curing polyester resin mortar |
| KEY/LONG | Large cover lifting keys with a long handle (sold as a pair) |
| KEYS/L | Small cover combined lifting key |

- Wrekin Products Ltd is continually seeking to improve our products and therefore reserves the right to alter product specifications without prior notice.
- It is the responsibility of all users to satisfy themselves the above data is current.
- All values stated are nominal within 2.5% tolerance.
- Installation details are available in the [knowledge base](#).
- All Wrekin products are supplied subject to our [Terms and Conditions of Sale](#).