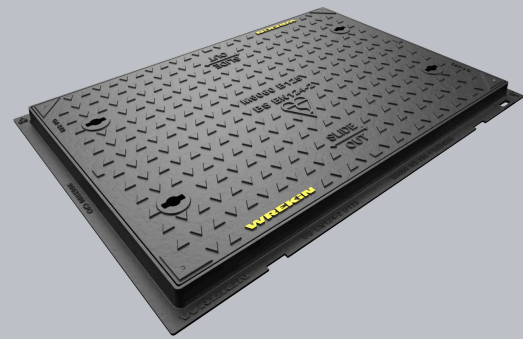
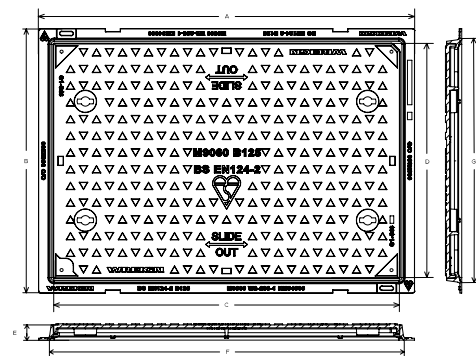


DMS1B2/9060/K

Safeseal B125 manhole cover 900mm x 600mm clear opening with 40mm frame depth



CHARACTERISTIC	VALUE
Range	Safeseal
Clear opening (mm)	900 x 600
Overall frame (mm)	1,010 x 710
Frame depth (mm)	40
Options	<ul style="list-style-type: none"> ► Screw locking ► Neoprene seal ► Standard badging ► Safety grille ► Flood and odour control plate ► Pressure relief holes



SPECIFICATION

GENERAL INFORMATION

Stock code	DMS1B2/9060/K
Primary material	Ductile iron
Range	Safeseal
Category	Manhole cover
Flanges	4

STANDARDS, CLASSES AND GROUPINGS

Standards	BS EN 124-2
BS EN 124 Class	B125
BS EN 124 Group	2
Third party certified	Kitemark

DIMENSIONS

Frame shape	Rectangular
Manhole shape	Rectangular
Overall frame (A x B)	1,010 mm x 710 mm
Clear opening (C x D)	900 mm x 600 mm
Frame depth (E)	40mm
Base opening (F x G)	950 mm x 650 mm

EPD DATA

Total life cycle (cradle to grave) 114.96 kg CO₂ equivalent



FEATURES

Tel: 01543 440 440
Fax: 01543 440 444
info@wrekinproducts.com
wrekinproducts.com



- ✓ Indexed corners ensure correct orientation first time, every time.
- ✓ Labyrinth seal helps to prevent odour escapes and water ingress.
- ✓ Safety keyway prevents accidental disengagement of the lifting key during the handling process.
- ✓ 70+ PSRV tested at top surface of chequer by UKAS accredited 3rd party.
- ✓ Designed with tapered sides and centralised lifting points to allow the cover to slide out of the frame.

AVAILABLE OPTIONS

- ✓ **Screw locking**
Screw locking deters unauthorised access to the chamber. An extended shank socket set is required to engage the locking screw.
- ✓ **Neoprene seal**
A neoprene seal can be included to reduce ingress and egress of dirt and gasses from the chamber.
- ✓ **Industry standard badging**
Integral industry-standard badging e.g. SW (Storm Water) and FW (Foul Water). Details are taken at point of order.
- ✓ **Safety grille**
Safety grilles prevent accidental chamber falls. Available in a variety of configurations; including bars and mesh as drop-in or hinged.
- ✓ **Flood and odour control plate**
The flood and odour control plate is manufactured from steel and provides resistance to flood-water ingress and the chamber-odour egress.
- ✓ **Pressure relief holes**
Pressure relief holes provide additional airflow, with sizes permitted up to the maximum allowances specified in BS EN 124.

ACCESSORIES

STOCK CODE	DESCRIPTION
PC/UNIFORM/151076	Uniform chamber adjustment unit 760mm x 100mm x 15mm
PC/UNIFORM/251076	Uniform chamber adjustment unit 760mm x 100mm x 25mm
PC/UNIWEDGE/755012	Uniform support wedge 120mm x 50mm x 75mm
YPCR/U12.5	12.5Kg Unipak® rapid curing polyester resin mortar
YPCR/U25	25Kg Unipak® rapid curing polyester resin mortar
KEY/LONG	Large cover lifting keys with a long handle (sold as a pair)
KEYS/L	Small cover combined lifting key

- Wrekin Products Ltd is continually seeking to improve our products and therefore reserves the right to alter product specifications without prior notice.
- It is the responsibility of all users to satisfy themselves the above data is current.
- All values stated are nominal within 2.5% tolerance.
- Installation details are available in the [knowledge base](#).
- All Wrekin products are supplied subject to our [Terms and Conditions of Sale](#).

Tel: 01543 440 440
Fax: 01543 440 444
info@wrekinproducts.com
wrekinproducts.com

