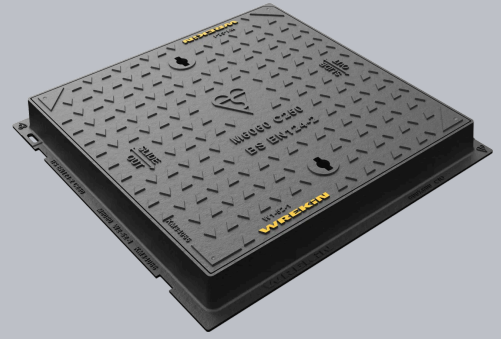
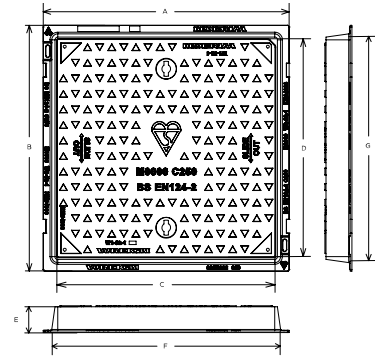


## DMS1 C3/6060/K

Safeseal C250 manhole cover 600mm x 600mm clear opening with 75mm frame depth



| CHARACTERISTIC     | VALUE   |
|--------------------|---|
| Range              | Safeseal  |
| Clear opening (mm) | 600 x 600   |
| Overall frame (mm) | 710 x 710   |
| Frame depth (mm)   | 75  |
| Options            | <ul style="list-style-type: none"> <li>► Screw locking</li> <li>► Neoprene seal</li> <li>► Standard badging</li> <li>► Flood and odour control plate</li> <li>► Safety grille</li> <li>► Pressure relief holes</li> </ul> |



## SPECIFICATION

### GENERAL INFORMATION

|                  |               |
|------------------|---------------|
| Stock code       | DMS1C3/6060/K |
| Primary material | Ductile iron  |
| Range            | Safeseal      |
| Category         | Manhole cover |
| Flanges          | 4             |

### STANDARDS, CLASSES AND GROUPINGS

|                       |             |
|-----------------------|-------------|
| Standards             | BS EN 124-2 |
| BS EN 124 Class       | C250        |
| BS EN 124 Group       | 3           |
| Third party certified | Kitemark    |

### DIMENSIONS

|                       |                 |
|-----------------------|-----------------|
| Frame shape           | Square          |
| Manhole shape         | Square          |
| Overall frame (A x B) | 710 mm x 710 mm |
| Clear opening (C x D) | 600 mm x 600 mm |
| Frame depth (E)       | 75mm            |
| Base opening (F x G)  | 650 mm x 650 mm |

### EPD DATA

Total life cycle (cradle to grave) 110.77 kg CO<sub>2</sub> equivalent



## FEATURES

Tel: 01543 440 440  
Fax: 01543 440 444  
[info@wrekinproducts.com](mailto:info@wrekinproducts.com)  
[wrekinproducts.com](http://wrekinproducts.com)



- ✓ Indexed corners ensure correct orientation first time, every time.
- ✓ Labyrinth seal helps to prevent odour escapes and water ingress.
- ✓ Safety keyway prevents accidental disengagement of the lifting key during the handling process.
- ✓ 70+ PSRV tested at top surface of chequer by UKAS accredited 3rd party.
- ✓ Designed with tapered sides and centralised lifting points to allow the cover to slide out of the frame.

## AVAILABLE OPTIONS

- ✓ **Screw locking**  
Screw locking deters unauthorised access to the chamber. An extended shank socket set is required to engage the locking screw.
- ✓ **Neoprene seal**  
A neoprene seal can be included to reduce ingress and egress of dirt and gasses from the chamber.
- ✓ **Industry standard badging**  
Integral industry-standard badging e.g. SW (Storm Water) and FW (Foul Water). Details are taken at point of order.
- ✓ **Flood and odour control plate**  
The flood and odour control plate is manufactured from steel and provides resistance to flood-water ingress and the chamber-odour egress.
- ✓ **Safety grille**  
Safety grilles prevent accidental chamber falls. Available in a variety of configurations; including bars and mesh as drop-in or hinged.
- ✓ **Pressure relief holes**  
Pressure relief holes provide additional airflow, with sizes permitted up to the maximum allowances specified in BS EN 124.

## ACCESSORIES

| STOCK CODE         | DESCRIPTION  |
|--------------------|--|
| PC/UNIFORM/151076  | Uniform chamber adjustment unit 760mm x 100mm x 15mm         |
| PC/UNIFORM/251076  | Uniform chamber adjustment unit 760mm x 100mm x 25mm         |
| PC/UNIWEDGE/755012 | Uniform support wedge 120mm x 50mm x 75mm                    |
| YPCR/U12.5         | 12.5Kg Unipak® rapid curing polyester resin mortar           |
| YPCR/U25           | 25Kg Unipak® rapid curing polyester resin mortar             |
| KEY/LONG           | Large cover lifting keys with a long handle (sold as a pair) |
| KEYS/L             | Small cover combined lifting key                             |

- Wrekin Products Ltd is continually seeking to improve our products and therefore reserves the right to alter product specifications without prior notice.
- It is the responsibility of all users to satisfy themselves the above data is current.
- All values stated are nominal within 2.5% tolerance.
- Installation details are available in the [knowledge base](#).
- All Wrekin products are supplied subject to our [Terms and Conditions of Sale](#).