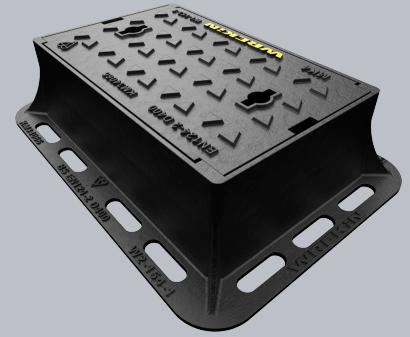
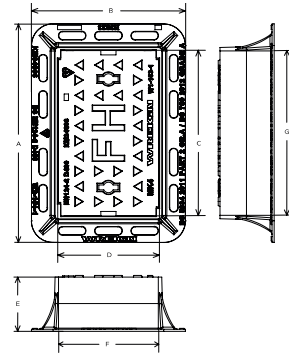


DBSOA5/3823/KT

Tristar D400 surface box 380mm x 235mm clear opening with 125mm frame depth



CHARACTERISTIC	VALUE
Range	Tristar
Clear opening (mm)	380 x 235
Overall frame (mm)	505 x 355
Frame depth (mm)	125



SPECIFICATION

GENERAL INFORMATION

Stock code	DBSOA5/3823/KT
Primary material	Ductile iron
Range	Tristar
Category	Surface box
Flanges	4

STANDARDS, CLASSES AND GROUPINGS

Standards	BS EN 124-2 BS750 BS5834
BS EN 124 Class	D400
BS EN 124 Group	4
Third party certified	Kitemark
BS 5834 Grade	A
BS 750 Grade	A

DIMENSIONS

Frame shape	Rectangular
Manhole shape	Rectangular
Overall frame (A x B)	505 mm x 355 mm
Clear opening (C x D)	380 mm x 235 mm
Frame depth (E)	125mm
Base opening (F x G)	400 mm x 250 mm

EPD DATA

Total life cycle (cradle to grave)	43.34 kg CO ₂ equivalent
------------------------------------	-------------------------------------



FEATURES

Tel: 01543 440 440
 Fax: 01543 440 444
info@wrekinproducts.com
wrekinproducts.com



- ✓ Indexed corners ensure correct orientation first time, every time.

ACCESSORIES

STOCK CODE	DESCRIPTION
PC/UNIFORM/151076	Uniform chamber adjustment unit 760mm x 100mm x 15mm
PC/UNIFORM/251076	Uniform chamber adjustment unit 760mm x 100mm x 25mm
PC/UNIWEDGE/755012	Uniform support wedge 120mm x 50mm x 75mm
YPCR/U6.5	6.5Kg Unipak [®] rapid curing polyester resin mortar
KEYSLIGHT	Small cover lifting keys with a standard handle (sold as a pair)
KEY/LONG	Large cover lifting keys with a long handle (sold as a pair)

NOTES

This product is third-party certified by BSI to BS EN 124.

- Wrekin Products Ltd is continually seeking to improve our products and therefore reserves the right to alter product specifications without prior notice.
- It is the responsibility of all users to satisfy themselves the above data is current.
- All values stated are nominal within 2.5% tolerance.
- Installation details are available in the [knowledge base](#).
- All Wrekin products are supplied subject to our [Terms and Conditions of Sale](#).