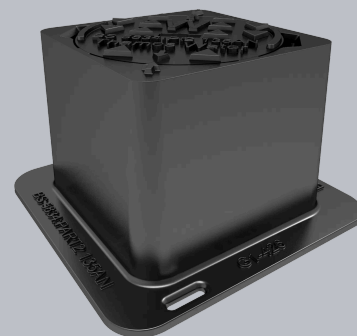


DBS1 A6/15D/TW

Tristar D400 surface box 145mm diameter clear opening with 150mm frame depth



CHARACTERISTIC	VALUE
Range	Tristar
Clear opening (mm)	145 x
Overall frame (mm)	255 x 250
Frame depth (mm)	150

SPECIFICATION

GENERAL INFORMATION

Stock code	DBS1A6/15D/TW
Primary material	Ductile iron
Range	Tristar
Category	Surface box
Flanges	4

STANDARDS, CLASSES AND GROUPINGS

Standards	BS5834
BS EN 124 Class	D400
BS EN 124 Group	4

DIMENSIONS

Frame shape	Rectangular
Manhole shape	Rectangular
Overall frame (A x B)	255 mm x 250 mm
Clear opening (C x D)	Ø 145 mm
Frame depth (E)	150mm
Base opening (F x G)	175 mm x 175 mm

EPD DATA

Total life cycle (cradle to grave) 19.68 kg CO₂ equivalent



FEATURES

✓ The cover is connected to the frame with a chain, reducing the risk of theft.

✓ Indexed corners ensure correct orientation first time, every time.

ACCESSORIES

STOCK CODE	DESCRIPTION
PC/UNIFORM/151076	Uniform chamber adjustment unit 760mm x 100mm x 15mm
PC/UNIFORM/251076	Uniform chamber adjustment unit 760mm x 100mm x 25mm
PC/UNIWEDGE/755012	Uniform support wedge 120mm x 50mm x 75mm
YPCR/U6.5	6.5Kg Unipak® rapid curing polyester resin mortar
KEYSLIGHT	Small cover lifting keys with a standard handle (sold as a pair)

- ▶ Wrekin Products Ltd is continually seeking to improve our products and therefore reserves the right to alter product specifications without prior notice.
- ▶ It is the responsibility of all users to satisfy themselves the above data is current.
- ▶ All values stated are nominal within 2.5% tolerance.
- ▶ Installation details are available in the [knowledge base](#).
- ▶ All Wrekin products are supplied subject to our [Terms and Conditions of Sale](#).