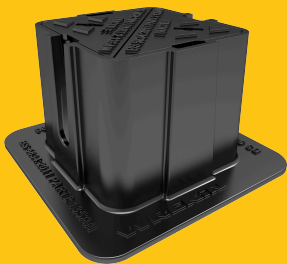
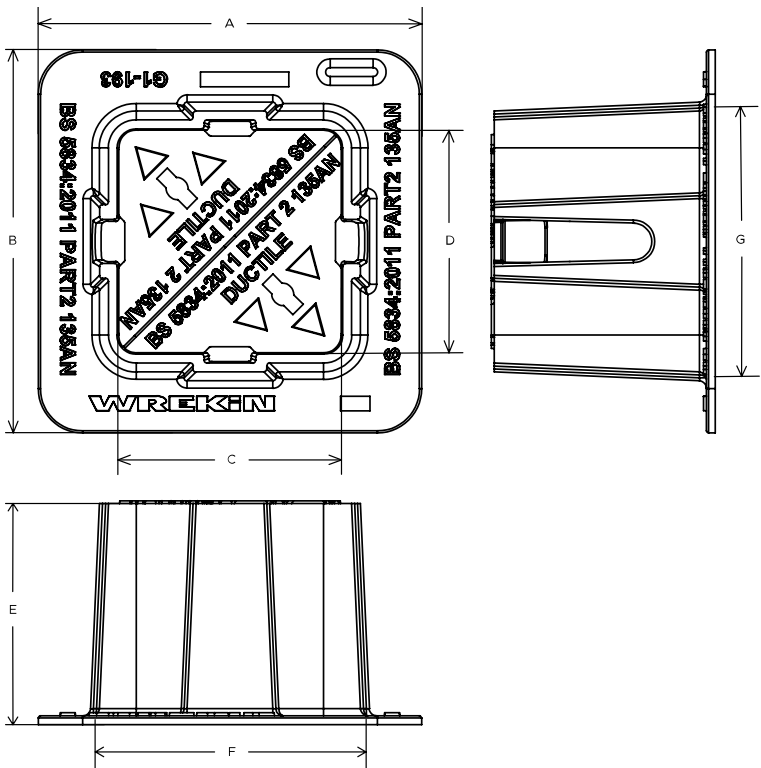


DBTOA6/1515

Tristar Grade A surface box 150mm x 150mm clear opening with 150mm frame depth



RANGE	CLEAR OPENING (MM)	OVERALL FRAME (MM)	FRAME DEPTH (MM)
Tristar	150 x 150	260 x 260	150



SPECIFICATION

General information

Stock code	DBTOA6/1515
Primary material	Ductile iron
Range	Tristar
Category	Surface box
Flanges	4

Standards, classes and groupings

Standards	BS5834
BS EN 124 Group	4
BS 5834 Grade	A

Dimensions

Frame shape	Rectangular
Manhole shape	Rectangular
Overall frame (A x B)	260 mm x 260 mm
Clear opening (C x D)	150 mm x 150 mm
Frame depth (E)	150mm
Base opening (F x G)	160 mm x 160 mm

ACCESSORIES

STOCK CODE	DESCRIPTION
PC/UNIFORM/151076	Uniform chamber adjustment unit 760mm x 100mm x 15mm
PC/UNIFORM/251076	Uniform chamber adjustment unit 760mm x 100mm x 25mm
PC/UNIWEDGE/755012	Uniform support wedge 120mm x 50mm x 75mm

STOCK CODE	DESCRIPTION
YPCR/U6.5	6.5Kg Unipak [®] rapid curing polyester resin mortar
KEYSLIGHT	Small cover lifting keys with a standard handle (sold as a pair)

NOTES

All values stated are nominal within 2.5% tolerance.

1. Wrekin Products Ltd is continually seeking to improve our products and therefore reserves the right to alter product specifications without prior notice.
2. It is the responsibility of all users to satisfy themselves the above data is current.
3. Installation details are available on request.
4. All Wrekin products are supplied subject to our [Terms and Conditions of Sale](#)

