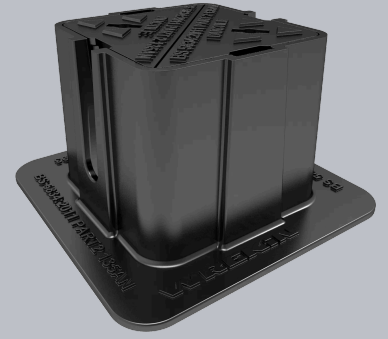
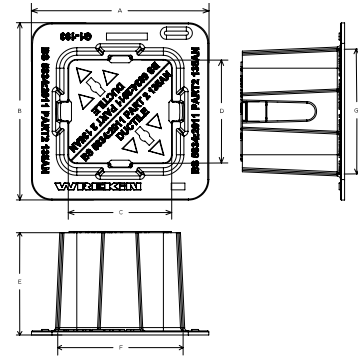


DBTOA6/1515

Tristar Grade A surface box 150mm x 150mm clear opening with 150mm frame depth



CHARACTERISTIC	VALUE
Range	Tristar
Clear opening (mm)	150 x 150
Overall frame (mm)	260 x 260
Frame depth (mm)	150



SPECIFICATION

GENERAL INFORMATION

Stock code	DBTOA6/1515
Primary material	Ductile iron
Range	Tristar
Category	Surface box
Flanges	4

STANDARDS, CLASSES AND GROUPINGS

Standards	BS5834
BS EN 124 Group	4
BS 5834 Grade	A

DIMENSIONS

Frame shape	Rectangular
Manhole shape	Rectangular
Overall frame (A x B)	260 mm x 260 mm
Clear opening (C x D)	150 mm x 150 mm
Frame depth (E)	150mm
Base opening (F x G)	160 mm x 160 mm

EPD DATA

Total life cycle (cradle to grave) 21.88 kg CO ₂ equivalent
--



ACCESSORIES

STOCK CODE	DESCRIPTION
PC/UNIFORM/151076	Uniform chamber adjustment unit 760mm x 100mm x 15mm

Tel: 01543 440 440
Fax: 01543 440 444
info@wrekinproducts.com
wrekinproducts.com



KM 34066

PM 32898

EMS 758038

STOCK CODE	DESCRIPTION
PC/UNIFORM/251076	Uniform chamber adjustment unit 760mm x 100mm x 25mm
PC/UNIWEDGE/755012	Uniform support wedge 120mm x 50mm x 75mm
YPCR/U6.5	6.5Kg Unipak® rapid curing polyester resin mortar
KEYSLIGHT	Small cover lifting keys with a standard handle (sold as a pair)

- ▶ Wrekin Products Ltd is continually seeking to improve our products and therefore reserves the right to alter product specifications without prior notice.
- ▶ It is the responsibility of all users to satisfy themselves the above data is current.
- ▶ All values stated are nominal within 2.5% tolerance.
- ▶ Installation details are available in the [knowledge base](#).
- ▶ All Wrekin products are supplied subject to our [Terms and Conditions of Sale](#).