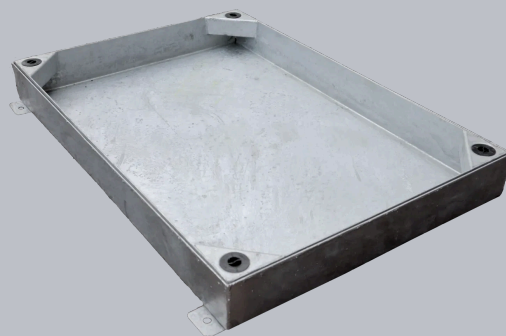


C291N/090060

Steel Block Paviour Access Cover, 900mm x 600mm clear opening, 100mm tray depth, Loading code N



CHARACTERISTIC	VALUE
Clear opening (mm)	900 x 600
Overall top of frame (mm)	965 x 665
Frame depth (mm)	105
Load duty	Heavy duty

SPECIFICATION

GENERAL INFORMATION

Stock code	C291N/090060
Primary material	Steel
Category	Access cover
Gross laden vehicle weight	25 tn
Load duty	Heavy duty
Slow moving wheel load (pneumatic tyres)	5 tn

STANDARDS, CLASSES AND GROUPINGS

Wrekin loading code	N
---------------------	---

DIMENSIONS

Frame shape	Rectangular
Manhole shape	Rectangular
Overall top of frame (A x B)	665 mm x 965 mm
Clear opening (C x D)	900 mm x 600 mm
Frame depth (E)	105mm
Overall base of frame	750 mm x 965 mm

FEATURES

- ✓ Hot dipped galvanised for corrosion resistance.
- ✓ Keyway lifting points are provided on the frame for safe handling.

NOTES

Mild steel - Hot dip galvanised to BS EN ISO 1461

Lifting keys - Standard heavy duty key (product code KEYSHEAVY)

- ▶ Wrekin Products Ltd is continually seeking to improve our products and therefore reserves the right to alter product specifications without prior notice.
- ▶ It is the responsibility of all users to satisfy themselves the above data is current.
- ▶ All values stated are nominal within 2.5% tolerance.
- ▶ Installation details are available in the [knowledge base](#).
- ▶ All Wrekin products are supplied subject to our [Terms and Conditions of Sale](#).