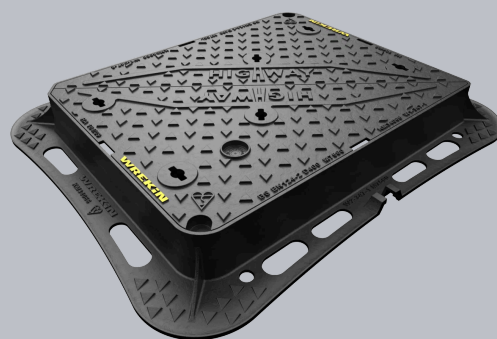
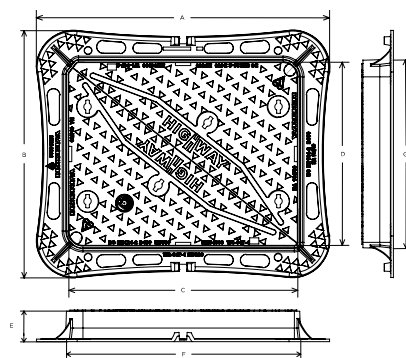


## DMTOD4/7560/KH

Highway D400 manhole cover 750mm x 600mm clear opening with 100mm frame depth



| CHARACTERISTIC     | VALUE  |
|--------------------|--|
| Range              | Highway  |
| Clear opening (mm) | 750 x 600  |
| Overall frame (mm) | 965 x 815  |
| Frame depth (mm)   | 100  |
| Options            | <ul style="list-style-type: none"> <li>► Screw locking</li> <li>► Standard badging</li> <li>► Flood and odour control plate</li> <li>► Safety grille</li> <li>► ID and comms badging</li> <li>► Pressure relief holes</li> </ul> |



## SPECIFICATION

### GENERAL INFORMATION

|                  |                |
|------------------|----------------|
| Stock code       | DMTOD4/7560/KH |
| Primary material | Ductile iron   |
| Range            | Highway        |
| Category         | Manhole cover  |
| Flanges          | 4              |

### STANDARDS, CLASSES AND GROUPINGS

|                       |  |
|-----------------------|--|
| Standards             | BS EN 124-2<br>DMRB<br>MCHW<br>CD 534 v0.1.0 |
| BS EN 124 Class       | D400   |
| BS EN 124 Group       | 4  |
| Third party certified | Kitemark                                     |

### DIMENSIONS

|                       |                 |
|-----------------------|-----------------|
| Frame shape           | Rectangular     |
| Manhole shape         | Rectangular     |
| Overall frame (A x B) | 965 mm x 815 mm |
| Clear opening (C x D) | 750 mm x 600 mm |
| Frame depth (E)       | 100mm           |
| Base opening (F x G)  | 775 mm x 625 mm |

### EPD DATA

Total life cycle (cradle to grave) 182.62 kg CO<sub>2</sub> equivalent



## FEATURES

- ✓ The enlarged frame corners help to dissipate loads onto the foundation, providing a longer service life and increased reliability.
- ✓ A retrofittable ID badge can be fitted, also compatible with antennas and communication options (RFID, NFC, IoT)
- ✓ Safety keyway prevents accidental disengagement of the lifting key during the handling process.
- ✓ 70+ PSRV tested at top surface of chequer by UKAS accredited 3rd party.
- ✓ Meets the requirements of CD 534 v0.1.0 (formerly HA 104/09).
- ✓ Frame gussets are supports which reinforce the corners where the frame sections meet, distributing stress evenly, preventing damage to the frame or the access cover.
- ✓ The high seating position ensures that forces are transmitted more directly downwards, meaning conversion of traffic loads into mortar-compatible compression forces.
- ✓ Indexed corners ensure correct orientation first time, every time.
- ✓ Keyway lifting points are provided on the frame for safe handling.
- ✓ Holes in the frame flange where mortar can pass between the underside and top side, creating an interlock, providing greater strength.
- ✓ Surface texturing above and below the flange enables better mortar engagement, reducing any lateral movement which could result in cracking.
- ✓ Non rocking 3-point suspension design, for silent operation.

## AVAILABLE OPTIONS

- ✓ **Screw locking**  
Screw locking deters unauthorised access to the chamber. An extended shank socket set is required to engage the locking screw.
- ✓ **Industry standard badging**  
Integral industry-standard badging e.g. SW (Storm Water) and FW (Foul Water). Details are taken at point of order.
- ✓ **Flood and odour control plate**  
The flood and odour control plate is manufactured from steel and provides resistance to flood-water ingress and the chamber-odour egress.
- ✓ **Safety grille**  
Safety grilles prevent accidental chamber falls. Available in a variety of configurations; including bars and mesh as drop-in or hinged.
- ✓ **ID badging and communications options**  
Bespoke badging and communications antennae, including NFC, RFID and IoT technology.
- ✓ **Pressure relief holes**  
Pressure relief holes provide additional airflow, with sizes permitted up to the maximum allowances specified in BS EN 124.

## ACCESSORIES

| STOCK CODE         | DESCRIPTION  |
|--------------------|--|
| PC/UNIFORM/151076  | Uniform chamber adjustment unit 760mm x 100mm x 15mm           |
| PC/UNIFORM/251076  | Uniform chamber adjustment unit 760mm x 100mm x 25mm           |
| PC/UNIWEDGE/755012 | Uniform support wedge 120mm x 50mm x 75mm                      |
| YPCR/U12.5         | 12.5Kg Unipak <sup>®</sup> rapid curing polyester resin mortar |
| YPCR/U25           | 25Kg Unipak <sup>®</sup> rapid curing polyester resin mortar   |

Tel: 01543 440 440  
Fax: 01543 440 444  
[info@wrekinproducts.com](mailto:info@wrekinproducts.com)  
[wrekinproducts.com](http://wrekinproducts.com)



| STOCK CODE  | DESCRIPTION  |
|-------------|--|
| GRITBLOCKER | Anti-blockage keyway insert  |
| SCREWLIFT   | Simple and rapid manhole frame levelling system. Simply push the bushes into the holes in the flange and adjust the levelling screws to the required height. |
| KEY/LONG    | Large cover lifting keys with a long handle (sold as a pair)   |
| KEYS/L      | Small cover combined lifting key   |

- Wrekin Products Ltd is continually seeking to improve our products and therefore reserves the right to alter product specifications without prior notice.
- It is the responsibility of all users to satisfy themselves the above data is current.
- All values stated are nominal within 2.5% tolerance.
- Installation details are available in the [knowledge base](#).
- All Wrekin products are supplied subject to our [Terms and Conditions of Sale](#).