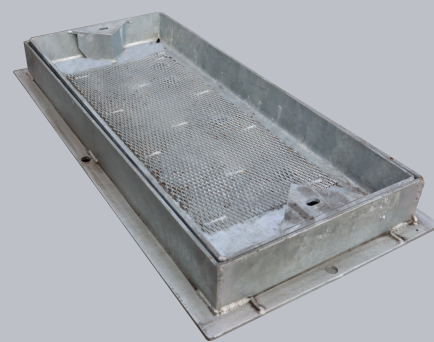


## C231N/072025/BT

Recessed cover for block paving, 725mm x 255mm clear opening, 86mm frame depth, Wrekin loading code N, BT Approved



CHARACTERISTIC	VALUE
Clear opening (mm)	725 x 255
Overall top of frame (mm)	825 x 335
Frame depth (mm)	86
Load duty	

## SPECIFICATION

### GENERAL INFORMATION

Stock code	C231N/072025/BT
Primary material	Steel
Category	Access cover
Flanges	4
Number of lids	1
Chamber ref	2

### STANDARDS, CLASSES AND GROUPINGS

BS EN 124 Class	B125
Wrekin loading code	N

### DIMENSIONS

Frame shape	Rectangular
Overall top of frame (A x B)	335 mm x 825 mm
Clear opening (C x D)	725 mm x 255 mm
Frame depth (E)	86mm
Overall base of frame	415 mm x 885 mm

## FEATURES

- ✓ Designed with tapered sides and centralised lifting points to allow the cover to slide out of the frame.
- ✓ Hot dipped galvanised for corrosion resistance.
- ✓ Covers have been approved for use by telecommunications companies such as Openreach.
- ✓ Can be installed by a single person, providing labour cost savings.

- ▶ Wrekin Products Ltd is continually seeking to improve our products and therefore reserves the right to alter product specifications without prior notice.
- ▶ It is the responsibility of all users to satisfy themselves the above data is current.
- ▶ All values stated are nominal within 2.5% tolerance.
- ▶ Installation details are available in the [knowledge base](#).
- ▶ All Wrekin products are supplied subject to our [Terms and Conditions of Sale](#).

