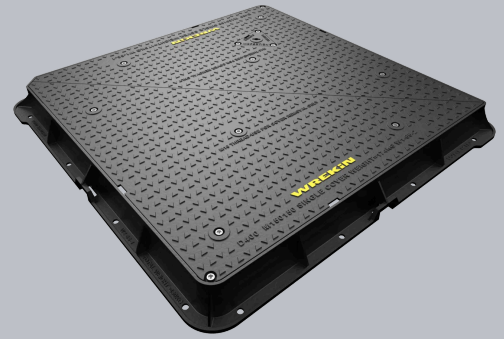
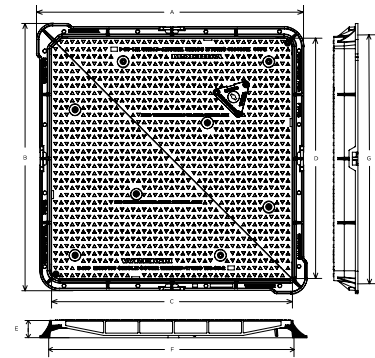


DMTOD6/1515/2

Hercules 400kN manhole cover 1500mm x 1500mm clear opening with 150mm frame depth | Cubis



CHARACTERISTIC	VALUE
Range	Hercules
Clear opening (mm)	1,500 x 1,500
Overall frame (mm)	1,685 x 1,685
Frame depth (mm)	150
Options	<ul style="list-style-type: none"> ► Safety grille ► Screw locking ► Flood and odour control plate ► Pressure relief holes



SPECIFICATION

GENERAL INFORMATION

Stock code	DMTOD6/1515/2
Primary material	Ductile iron
Range	Hercules
Category	Manhole cover
Flanges	4

STANDARDS, CLASSES AND GROUPINGS

BS EN 124 Group	4
-----------------	---

DIMENSIONS

Frame shape	Square
Manhole shape	Square
Overall frame (A x B)	1,685 mm x 1,685 mm
Clear opening (C x D)	1,500 mm x 1,500 mm
Frame depth (E)	150mm
Base opening (F x G)	1,530 mm x 1,530 mm

EPD DATA

Total life cycle (cradle to grave) 996.73 kg CO ₂ equivalent



FEATURES

Tel: 01543 440 440
Fax: 01543 440 444
info@wrekinproducts.com
wrekinproducts.com



- ✓ The enlarged frame corners help to dissipate loads onto the foundation, providing a longer service life and increased reliability.
- ✓ Inspection window allows safe and easy view into chamber.
- ✓ Mechanical lifting points are provided.
- ✓ 70+ PSRV tested at top surface of chequer by UKAS accredited 3rd party.
- ✓ Keyway lifting points are provided on the frame for safe handling.
- ✓ Indexed corners ensure correct orientation first time, every time.

AVAILABLE OPTIONS

- ✓ **Safety grille**
Safety grilles prevent accidental chamber falls. Available in a variety of configurations; including bars and mesh as drop-in or hinged.
- ✓ **Screw locking**
Screw locking deters unauthorised access to the chamber. An extended shank socket set is required to engage the locking screw.
- ✓ **Flood and odour control plate**
The flood and odour control plate is manufactured from steel and provides resistance to flood-water ingress and the chamber-odour egress.
- ✓ **Pressure relief holes**
Pressure relief holes provide additional airflow, with sizes permitted up to the maximum allowances specified in BS EN 124.

ACCESSORIES

STOCK CODE	DESCRIPTION
PC/UNIFORM/151076	Uniform chamber adjustment unit 760mm x 100mm x 15mm
PC/UNIFORM/251076	Uniform chamber adjustment unit 760mm x 100mm x 25mm
PC/UNIWEDGE/755012	Uniform support wedge 120mm x 50mm x 75mm
YPCR/U12.5	12.5Kg Unipak® rapid curing polyester resin mortar
YPCR/U25	25Kg Unipak® rapid curing polyester resin mortar
SCREWLIFT	Simple and rapid manhole frame levelling system. Simply push the bushes into the holes in the flange and adjust the levelling screws to the required height.
GRITBLOCKER	Anti-blockage keyway insert
KEY/LONG	Large cover lifting keys with a long handle (sold as a pair)
KEYS/L	Small cover combined lifting key
KEY/LIFTINGEYE	M16 50mm threaded lifting loops (sold as a pair)

NOTES

BS EN 124 and CD 534 apply to products with a clear opening up to 1 metre. The Hercules range of access covers have a clear opening greater than this, however load capability and design features exceed the requirements of these documents. Please note that Hercules 1,200 x 1,200mm cover is the only cover in the range to have keyholes for manual lifting.

- ▶ Wrekin Products Ltd is continually seeking to improve our products and therefore reserves the right to alter product specifications without prior notice.
- ▶ It is the responsibility of all users to satisfy themselves the above data is current.
- ▶ All values stated are nominal within 2.5% tolerance.
- ▶ Installation details are available in the [knowledge base](#).
- ▶ All Wrekin products are supplied subject to our [Terms and Conditions of Sale](#).

