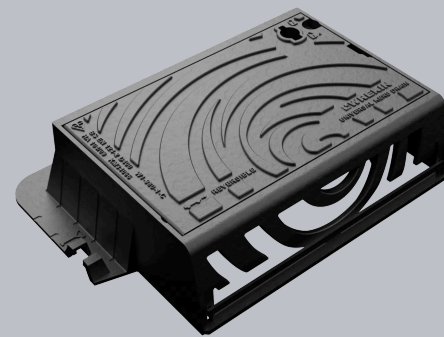
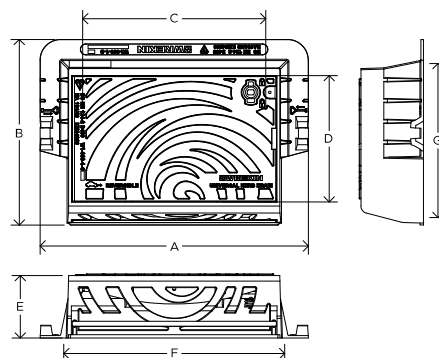


DGK115/HB/KG

H₂GO D400 kerb unit 440mm x 305mm clear opening with 150mm frame depth



CHARACTERISTIC	VALUE
Range	H2GO
Clear opening (mm)	440 x 305
Overall frame (mm)	645 x 445
Frame depth (mm)	150



SPECIFICATION

GENERAL INFORMATION

Stock code	DGK115/HB/KG
Primary material	Ductile iron
Range	H2GO
Category	Kerb unit
Flanges	4

STANDARDS, CLASSES AND GROUPINGS

Standards	BS EN 124-2 CD 534 (formerly HA 104/09)
BS EN 124 Class	D400
BS EN 124 Group	3
Third party certified	Kitemark

DIMENSIONS

Frame shape	Rectangular
Overall frame (A x B)	645 mm x 445 mm
Clear opening (C x D)	440 mm x 305 mm
Frame depth (E)	150mm
Base opening (F x G)	530 mm x 370 mm
Waterway area	296cm ²

EPD DATA

Total life cycle (cradle to grave) 84.03 kg CO₂ equivalent



FEATURES

✓ Reversible hinge allows the grating to hinge with the direction of the traffic flow, improving safety.

✓ Captive hinges reduce theft risk whilst allowing easy lifting.

Tel: 01543 440 440
Fax: 01543 440 444
info@wrekinproducts.com
wrekinproducts.com



✓ Mechanical lifting points are provided.

✓ Safety keyway prevents accidental disengagement of the lifting key during the handling process.

ACCESSORIES

STOCK CODE	DESCRIPTION
PC/UNIFORM/151076	Uniform chamber adjustment unit 760mm x 100mm x 15mm
PC/UNIFORM/251076	Uniform chamber adjustment unit 760mm x 100mm x 25mm
PC/UNIWEDGE/755012	Uniform support wedge 120mm x 50mm x 75mm
YPCR/U12.5	12.5Kg Unipak® rapid curing polyester resin mortar
YPCR/U25	25Kg Unipak® rapid curing polyester resin mortar
SCREWLIFT	Simple and rapid manhole frame levelling system. Simply push the bushes into the holes in the flange and adjust the levelling screws to the required height.
GRITBLOCKER	Anti-blockage keyway insert
KEY/LONG	Large cover lifting keys with a long handle (sold as a pair)
KEYS/L	Small cover combined lifting key

NOTES

Requires a comms key to open and lock.

Compatible with

Stock code	Description
DGCC/6545/G	H2GO gully chute connector 655mm x 450mm x 185mm with 150mm and 160mm spigot sizes

- ▶ Wrekin Products Ltd is continually seeking to improve our products and therefore reserves the right to alter product specifications without prior notice.
- ▶ It is the responsibility of all users to satisfy themselves the above data is current.
- ▶ All values stated are nominal within 2.5% tolerance.
- ▶ Installation details are available in the [knowledge base](#).
- ▶ All Wrekin products are supplied subject to our [Terms and Conditions of Sale](#).

Tel: 01543 440 440
Fax: 01543 440 444
info@wrekinproducts.com
wrekinproducts.com

