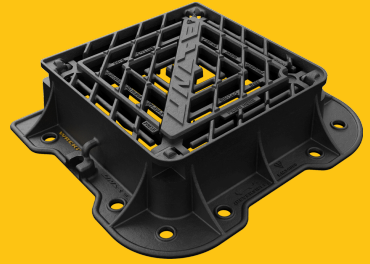


DGHTOD6/4545/KU

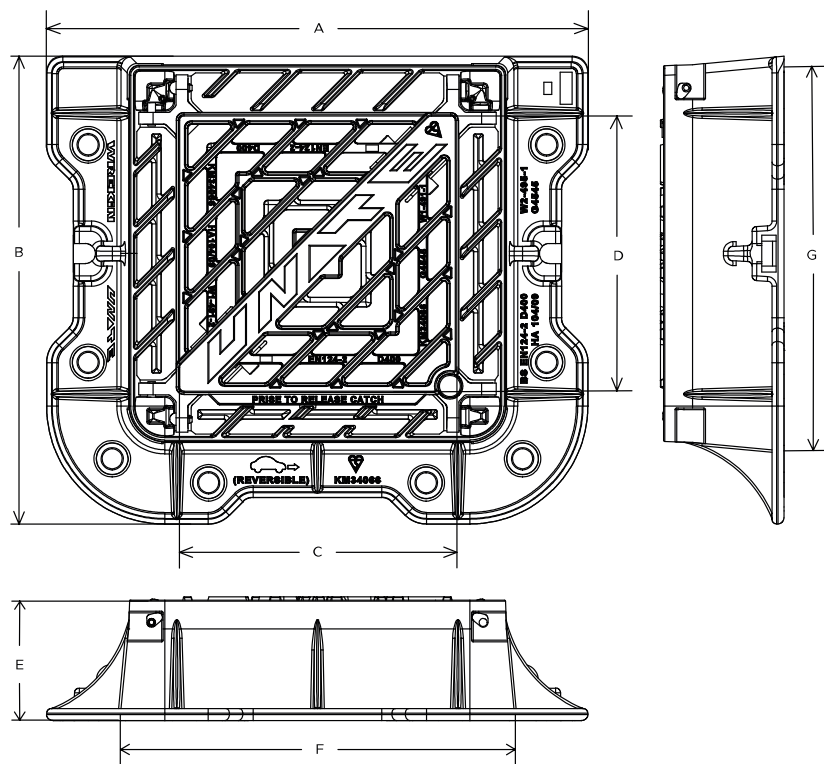
Unite D400 3 flange gully grate 450mm x 450mm clear opening with 150mm frame depth



RANGE	CLEAR OPENING (MM)	BASE OPENING (MM)	OVERALL FRAME (MM)	FRAME DEPTH (MM)	WATERWAY AREA (CM ²)	OPTIONS
Unite	450 x 450	475 x 475	670 x 580	150	1,440	<input type="checkbox"/> Screw locking

FEATURES

- ✓ Both covers of the double triangular grating feature I beams that interlock to provide high rigidity while still allowing the grating to hinge as one unit.
- ✓ The enlarged frame corners help to dissipate loads onto the foundation, providing a longer service life and increased reliability.
- ✓ Mechanical lifting points are provided.
- ✓ Safety-stop hinges prevent covers from falling once opened.
- ✓ Unite is available with a 10 year warranty (subject to terms).
- ✓ Meets the requirements of CD 534 v0.1.0 (formerly HA 104/09).
- ✓ Indexed corners ensure correct orientation first time, every time.
- ✓ Holes in the frame flange where mortar can pass between the underside and top side, creating an interlock, providing greater strength.
- ✓ The covers feature a universal beam (also known as an I beam) providing significant improvements to rigidity, reducing seat wear for an enhanced service life.
- ✓ Captive hinges reduce theft risk whilst allowing easy lifting.
- ✓ Hinged in three directions to allow the product to fit in any required orientation.
- ✓ Reversible hinge allows the grating to hinge with the direction of the traffic flow, improving safety.
- ✓ Reduced apertures provides increased safety for pedestrians and bicycles, over standard gratings.
- ✓ Non rocking 3-point suspension design, for silent operation.
- ✓ Frame gussets are supports which reinforce the corners where the frame sections meet, distributing stress evenly, preventing damage to the frame or the access cover.
- ✓ Keyway lifting points are provided on the frame for safe handling.
- ✓ Unlike sharp, square-edged frames, rounded edges reduce stress concentrations and minimise crack formation.



SPECIFICATION

General information

Stock code	DGHT0D6/4545/KU
Primary material	Ductile iron
Range	Unite
Category	Gully grate
Flanges	3

Standards, classes and groupings

Standards	BS EN 124-2 DMRB MCHW CD 534 v0.1.0
BS EN 124 Class	D400

BS EN 124 Group

3

4

Third party certified

Kitemark

CD 526 hydraulic capacity

Q

Dimensions

Frame shape

Rectangular

Manhole shape

Rectangular

Overall frame (A x B)

670 mm x 580 mm

Clear opening (C x D)

450 mm x 450 mm

Frame depth (E)

150mm

Base opening (F x G)

475 mm x 475 mm

Waterway area

1,440cm²

AVAILABLE OPTIONS

✓ Screw locking

Screw locking deters unauthorised access to the chamber. An extended shank socket set is required to engage the locking screw.

ACCESSORIES

STOCK CODE	DESCRIPTION
PC/UNIFORM/151076	Uniform chamber adjustment unit 760mm x 100mm x 15mm
PC/UNIFORM/251076	Uniform chamber adjustment unit 760mm x 100mm x 25mm
PC/UNIWEDGE/755012	Uniform support wedge 120mm x 50mm x 75mm
YPCR/U12.5	12.5Kg Unipak [®] rapid curing polyester resin mortar
YPCR/U25	25Kg Unipak [®] rapid curing polyester resin mortar

STOCK CODE	DESCRIPTION
SCREWLIFT	Simple and rapid manhole frame levelling system. Simply push the bushes into the holes in the flange and adjust the levelling screws to the required height.

NOTES

The D400 load capability of these Group 3 products also offers the benefit of making them suitable for exposure to Group 4 traffic types. Where 3-flange D400 Gully Grate assemblies are employed, we recommend that they are installed against a kerb, not in an open highway location. All values stated are nominal within 2.5% tolerance.

Fully compliant with the requirements of specification clause [6.2.47 of Cycle Infrastructure Design Local Transport Note 1/20](#).

1. Wrekin Products Ltd is continually seeking to improve our products and therefore reserves the right to alter product specifications without prior notice.
2. It is the responsibility of all users to satisfy themselves the above data is current.
3. Installation details are available in the [knowledge base](#).
4. All Wrekin products are supplied subject to our [Terms and Conditions of Sale](#)

