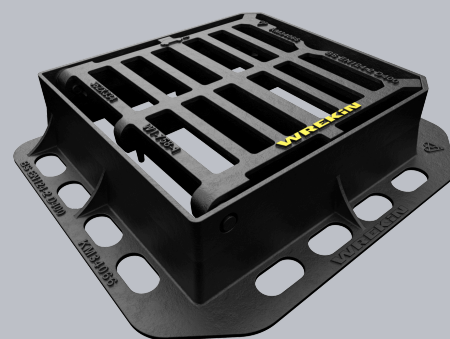
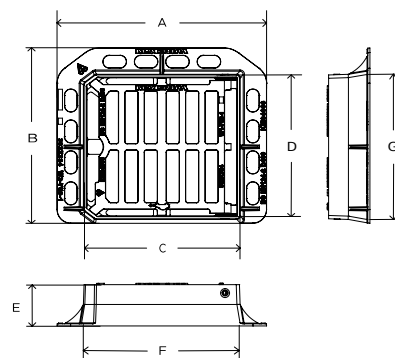


DGHOD4/3633/KT

Tristar D400 3 flange gully grate 360mm x 335mm clear opening with 100mm frame depth



CHARACTERISTIC	VALUE
Range	Tristar
Clear opening (mm)	360 x 335
Base opening (mm)	380 x 355
Overall frame (mm)	505 x 425
Frame depth (mm)	100
Waterway area (cm ²)	750
Options	► Screw locking



SPECIFICATION

GENERAL INFORMATION

Stock code	DGHOD4/3633/KT
Primary material	Ductile iron
Range	Tristar
Category	Gully grate
Flanges	3

STANDARDS, CLASSES AND GROUPINGS

Standards	BS EN 124-2 CD 526 (formerly HA 102/17)
BS EN 124 Class	D400
BS EN 124 Group	3 4
Third party certified	Kitemark
CD 526 hydraulic capacity	S

DIMENSIONS

Frame shape	Rectangular
Manhole shape	Rectangular
Overall frame (A x B)	505 mm x 425 mm
Clear opening (C x D)	360 mm x 335 mm
Frame depth (E)	100mm
Base opening (F x G)	380 mm x 355 mm
Waterway area	750cm ²

EPD DATA

Total life cycle (cradle to grave)	45.99 kg CO ₂ equivalent
------------------------------------	-------------------------------------



FEATURES

- ✓ Captive hinges reduce theft risk whilst allowing easy lifting.

AVAILABLE OPTIONS

- ✓ **Screw locking**
Screw locking deters unauthorised access to the chamber.
An extended shank socket set is required to engage the locking screw.

ACCESSORIES

STOCK CODE	DESCRIPTION
PC/UNIFORM/151076	Uniform chamber adjustment unit 760mm x 100mm x 15mm
PC/UNIFORM/251076	Uniform chamber adjustment unit 760mm x 100mm x 25mm
PC/UNIWEDGE/755012	Uniform support wedge 120mm x 50mm x 75mm
YPCR/U12.5	12.5Kg Unipak® rapid curing polyester resin mortar
YPCR/U25	25Kg Unipak® rapid curing polyester resin mortar

NOTES

The D400 load capability of these Group 3 products also offers the benefit of making them suitable for exposure to Group 4 traffic types. Where 3-flange D400 Gully Grate assemblies are employed, we recommend that they are installed against a kerb, not in an open highway location.

- ▶ Wrekin Products Ltd is continually seeking to improve our products and therefore reserves the right to alter product specifications without prior notice.
- ▶ It is the responsibility of all users to satisfy themselves the above data is current.
- ▶ All values stated are nominal within 2.5% tolerance.
- ▶ Installation details are available in the [knowledge base](#).
- ▶ All Wrekin products are supplied subject to our [Terms and Conditions of Sale](#).