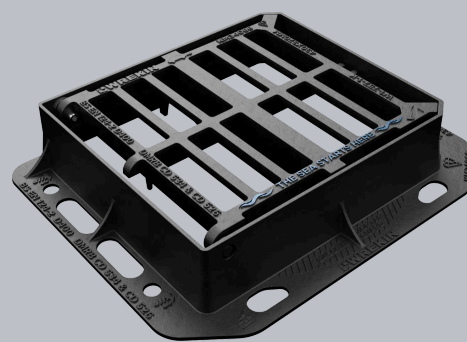
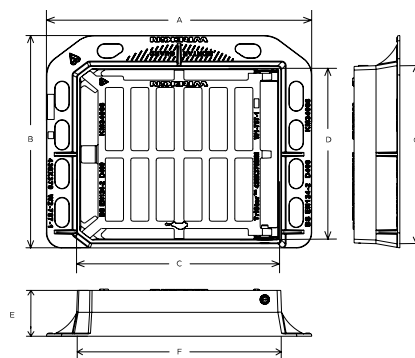


## DGHOD4/4337/KT

Tristar D400 3 flange gully grate 430mm x 370mm clear opening with 100mm frame depth



CHARACTERISTIC	VALUE
Range	Tristar
Clear opening (mm)	430 x 370
Base opening (mm)	450 x 390
Overall frame (mm)	575 x 460
Frame depth (mm)	100
Waterway area (cm <sup>2</sup> )	1,050
Options	► Screw locking



## SPECIFICATION

### GENERAL INFORMATION

Stock code	DGHOD4/4337/KT
Primary material	Ductile iron
Range	Tristar
Category	Gully grate
Flanges	3

### STANDARDS, CLASSES AND GROUPINGS

Standards	BS EN 124-2 CD 526 (formerly HA 102/17) CD 534 (formerly HA 104/09)
BS EN 124 Class	D400
BS EN 124 Group	3 4
Third party certified	Kitemark
CD 526 hydraulic capacity	R

### DIMENSIONS

Frame shape	Rectangular
Manhole shape	Rectangular
Overall frame (A x B)	575 mm x 460 mm
Clear opening (C x D)	430 mm x 370 mm
Frame depth (E)	100mm
Base opening (F x G)	450 mm x 390 mm
Waterway area	1,050cm <sup>2</sup>

### EPD DATA

Total life cycle (cradle to grave) 53.72 kg CO<sub>2</sub> equivalent



## FEATURES

- ✓ Captive hinges reduce theft risk whilst allowing easy lifting.

## AVAILABLE OPTIONS

- ✓ **Screw locking**  
Screw locking deters unauthorised access to the chamber. An extended shank socket set is required to engage the locking screw.

## ACCESSORIES

STOCK CODE	DESCRIPTION
PC/UNIFORM/151076	Uniform chamber adjustment unit 760mm x 100mm x 15mm
PC/UNIFORM/251076	Uniform chamber adjustment unit 760mm x 100mm x 25mm
PC/UNIWEDGE/755012	Uniform support wedge 120mm x 50mm x 75mm
YPCR/U12.5	12.5Kg Unipak <sup>®</sup> rapid curing polyester resin mortar
YPCR/U25	25Kg Unipak <sup>®</sup> rapid curing polyester resin mortar
ARMGSHELL/4337	Armadillo gully grate protector shell 645mm x 490mm (compatible with Tristar D400 430mm x 370mm gully grating)

## NOTES

- ▶ The wedge seated frame has been designed to suit all existing gully pot styles and will sit over a typical Ø 450mm circular or horseshoe chamber opening. The frame flange has reduced apertures as a mortar guard to stop backfill material from entering the chamber.
- ▶ The use of Armadillo is recommended where exposure to construction site traffic is likely.
- ▶ The D400 load capability of these Group 3 products also offers the benefit of making them suitable for exposure to Group 4 traffic types. Where 3-flange D400 Gully Grate assemblies are employed, we recommend that they are installed against a kerb, not in an open highway location.

### The Sea Starts Here

We've taken a notable step in environmental advocacy by updating our most popular Tristar gully gratings to include the phrase "The Sea Starts Here". This initiative aims to highlight the critical issue of water pollution among communities and the wider industry. The message serves as a poignant reminder that our actions on land reverberate through to our oceans, urging us to consider how we dispose of waste and the long-term effects on marine ecosystems. [Find out more.](#)

- ▶ Wrekin Products Ltd is continually seeking to improve our products and therefore reserves the right to alter product specifications without prior notice.
- ▶ It is the responsibility of all users to satisfy themselves the above data is current.
- ▶ All values stated are nominal within 2.5% tolerance.
- ▶ Installation details are available in the [knowledge base](#).
- ▶ All Wrekin products are supplied subject to our [Terms and Conditions of Sale](#).

Tel: 01543 440 440  
Fax: 01543 440 444  
[info@wrekinproducts.com](mailto:info@wrekinproducts.com)  
[wrekinproducts.com](http://wrekinproducts.com)

