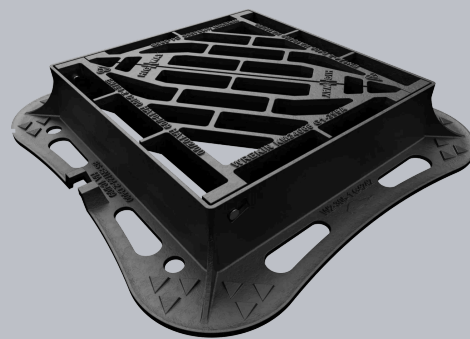
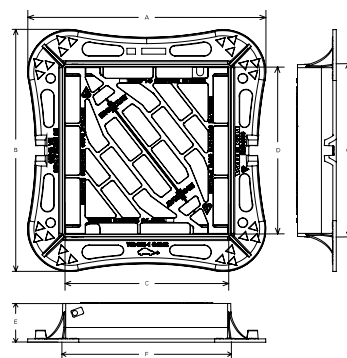


DGHTOD4/4242/KH4F

Highway D400 4 flange gully grate 425mm x 425mm clear opening with 100mm frame depth



CHARACTERISTIC	VALUE
Range	Highway
Clear opening (mm)	425 x 425
Base opening (mm)	440 x 450
Overall frame (mm)	615 x 625
Frame depth (mm)	100
Waterway area (cm ²)	1,250
Options	► Screw locking



SPECIFICATION

GENERAL INFORMATION

Stock code	DGHTOD4/4242/KH4F
Primary material	Ductile iron
Range	Highway
Category	Gully grate
Flanges	4

STANDARDS, CLASSES AND GROUPINGS

Standards	BS EN 124-2 DMRB MCHW CD 534 v0.1.0
BS EN 124 Class	D400
BS EN 124 Group	3 4
Third party certified	Kitemark
CD 526 hydraulic capacity	R

DIMENSIONS

Frame shape	Rectangular
Manhole shape	Rectangular
Overall frame (A x B)	615 mm x 625 mm
Clear opening (C x D)	425 mm x 425 mm
Frame depth (E)	100mm
Base opening (F x G)	440 mm x 450 mm
Waterway area	1,250cm ²

EPD DATA

Total life cycle (cradle to grave) 79.82 kg CO₂ equivalent



FEATURES

- ✓ Non rocking 3-point suspension design, for silent operation.
- ✓ Meets the requirements of CD 534 v0.1.0 (formerly HA 104/09).
- ✓ Captive hinges reduce theft risk whilst allowing easy lifting.
- ✓ The enlarged frame corners help to dissipate loads onto the foundation, providing a longer service life and increased reliability.
- ✓ Frame gussets are supports which reinforce the corners where the frame sections meet, distributing stress evenly, preventing damage to the frame or the access cover.
- ✓ Keyway lifting points are provided on the frame for safe handling.
- ✓ Holes in the frame flange where mortar can pass between the underside and top side, creating an interlock, providing greater strength.
- ✓ Surface texturing above and below the flange enables better mortar engagement, reducing any lateral movement which could result in cracking.

AVAILABLE OPTIONS

- ✓ **Screw locking**
Screw locking deters unauthorised access to the chamber. An extended shank socket set is required to engage the locking screw.

ACCESSORIES

STOCK CODE	DESCRIPTION
PC/UNIFORM/151076	Uniform chamber adjustment unit 760mm x 100mm x 15mm
PC/UNIFORM/251076	Uniform chamber adjustment unit 760mm x 100mm x 25mm
PC/UNIWEDGE/755012	Uniform support wedge 120mm x 50mm x 75mm
YPCR/U12.5	12.5Kg Unipak® rapid curing polyester resin mortar
YPCR/U25	25Kg Unipak® rapid curing polyester resin mortar
SCREWLIFT	Simple and rapid manhole frame levelling system. Simply push the bushes into the holes in the flange and adjust the levelling screws to the required height.

NOTES

The D400 load capability of these Group 3 products also offers the benefit of making them suitable for exposure to Group 4 traffic types. Where 3-flange D400 Gully Grate assemblies are employed, we recommend that they are installed against a kerb, not in an open highway location.

- ▶ Wrekin Products Ltd is continually seeking to improve our products and therefore reserves the right to alter product specifications without prior notice.
- ▶ It is the responsibility of all users to satisfy themselves the above data is current.
- ▶ All values stated are nominal within 2.5% tolerance.
- ▶ Installation details are available in the [knowledge base](#).
- ▶ All Wrekin products are supplied subject to our [Terms and Conditions of Sale](#).

