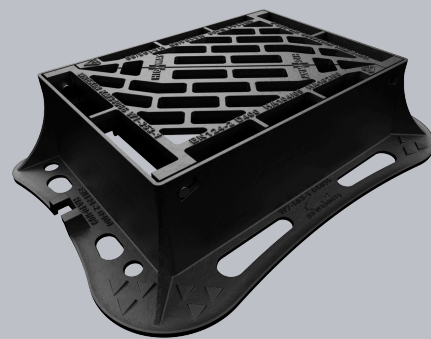
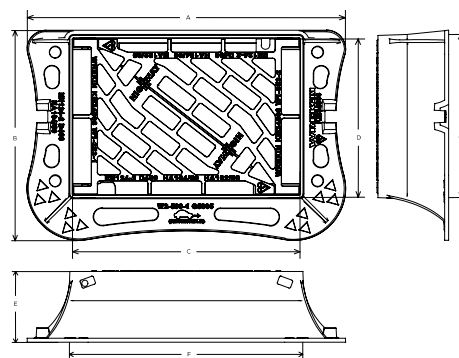


DGHTOD6/5035/KH

Highway D400 3 flange gully grate 480mm x 320mm clear opening with 150mm frame depth



CHARACTERISTIC	VALUE
Range	Highway
Clear opening (mm)	480 x 320
Base opening (mm)	500 x 350
Overall frame (mm)	675 x 445
Frame depth (mm)	150
Waterway area (cm ²)	950
Options	► Screw locking



SPECIFICATION

GENERAL INFORMATION

Stock code	DGHTOD6/5035/KH
Primary material	Ductile iron
Range	Highway
Category	Gully grate
Flanges	3

STANDARDS, CLASSES AND GROUPINGS

Standards	BS EN 124-2 DMRB MCHW CD 534 v0.1.0
BS EN 124 Class	D400
BS EN 124 Group	3 4
Third party certified	Kitemark
CD 526 hydraulic capacity	R

DIMENSIONS

Frame shape	Rectangular
Manhole shape	Rectangular
Overall frame (A x B)	675 mm x 445 mm
Clear opening (C x D)	480 mm x 320 mm
Frame depth (E)	150mm
Base opening (F x G)	500 mm x 350 mm
Waterway area	950cm ²

EPD DATA

Total life cycle (cradle to grave)	87.99 kg CO ₂ equivalent
------------------------------------	-------------------------------------



FEATURES

- ✓ Non rocking 3-point suspension design, for silent operation.
- ✓ Meets the requirements of CD 534 v0.1.0 (formerly HA 104/09).
- ✓ Captive hinges reduce theft risk whilst allowing easy lifting.
- ✓ The enlarged frame corners help to dissipate loads onto the foundation, providing a longer service life and increased reliability.
- ✓ Frame gussets are supports which reinforce the corners where the frame sections meet, distributing stress evenly, preventing damage to the frame or the access cover.
- ✓ Keyway lifting points are provided on the frame for safe handling.
- ✓ Holes in the frame flange where mortar can pass between the underside and top side, creating an interlock, providing greater strength.
- ✓ Reversible hinge allows the grating to hinge with the direction of the traffic flow, improving safety.
- ✓ Surface texturing above and below the flange enables better mortar engagement, reducing any lateral movement which could result in cracking.

AVAILABLE OPTIONS

- ✓ **Screw locking**
Screw locking deters unauthorised access to the chamber. An extended shank socket set is required to engage the locking screw.

ACCESSORIES

STOCK CODE	DESCRIPTION
PC/UNIFORM/151076	Uniform chamber adjustment unit 760mm x 100mm x 15mm
PC/UNIFORM/251076	Uniform chamber adjustment unit 760mm x 100mm x 25mm
PC/UNIWEDGE/755012	Uniform support wedge 120mm x 50mm x 75mm
YPCR/U12.5	12.5Kg Unipak® rapid curing polyester resin mortar
YPCR/U25	25Kg Unipak® rapid curing polyester resin mortar
SCREWLIFT	Simple and rapid manhole frame levelling system. Simply push the bushes into the holes in the flange and adjust the levelling screws to the required height.

NOTES

Compatible with

Stock code	Description
DGCC/6545/G	H2GO gully chute connector 655mm x 450mm x 185mm with 150mm and 160mm spigot sizes

Where 3-flange D400 Gully Grate assemblies are employed, we recommend that they are installed against a kerb, not in an open highway location.

The D400 load capability of these Group 3 products also offers the benefit of making them suitable for exposure to Group 4 traffic types. Where 3-flange D400 Gully Grate assemblies are employed, we recommend that they are installed against a kerb, not in an open highway location.

- ▶ Wrekin Products Ltd is continually seeking to improve our products and therefore reserves the right to alter product specifications without prior notice.
- ▶ It is the responsibility of all users to satisfy themselves the above data is current.
- ▶ All values stated are nominal within 2.5% tolerance.
- ▶ Installation details are available in the [knowledge base](#).
- ▶ All Wrekin products are supplied subject to our [Terms and Conditions of Sale](#).