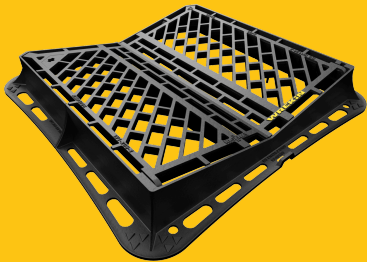


DGHVOD6/9090/KH

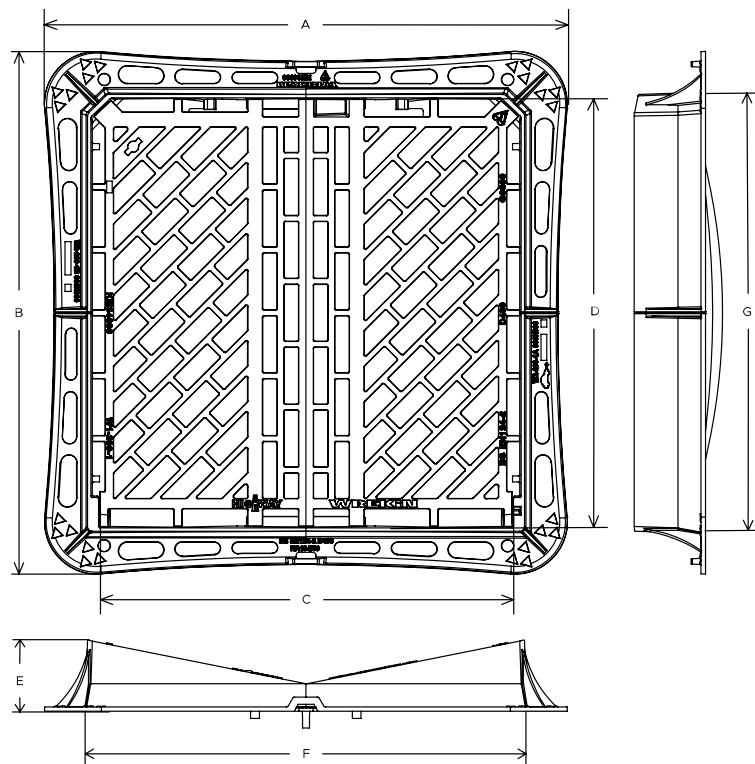
Highway D400 4 flange V gully grate 900mm x 900mm clear opening with 150mm frame depth



| RANGE | CLEAR OPENING (MM) | BASE OPENING (MM) | OVERALL FRAME (MM) | FRAME DEPTH (MM) | WATERWAY AREA (CM²) | OPTIONS |
|---------|--------------------|-------------------|--------------------|------------------|---------------------|--|
| Highway | 900 x 900 | 925 x 925 | 1,100 x 1,100 | 150 | 5,100 | <input type="checkbox"/> Screw locking |

FEATURES

- ✓ Meets the requirements of CD 534 v0.1.0 (formerly HA 104/09).
- ✓ The enlarged frame corners help to dissipate loads onto the foundation, providing a longer service life and increased reliability.
- ✓ Keyway lifting points are provided on the frame for safe handling.
- ✓ Surface texturing above and below the flange enables better mortar engagement, reducing any lateral movement which could result in cracking.
- ✓ Captive hinges reduce theft risk whilst allowing easy lifting.
- ✓ Frame gussets are supports which reinforce the corners where the frame sections meet, distributing stress evenly, preventing damage to the frame or the access cover.
- ✓ Holes in the frame flange where mortar can pass between the underside and top side, creating an interlock, providing greater strength.
- ✓ Spring bar low security locking feature.



SPECIFICATION

General information

| | |
|------------------|-----------------|
| Stock code | DGHV0D6/9090/KH |
| Primary material | Ductile iron |
| Range | Highway |
| Category | Gully grate |
| Flanges | 4 |

Standards, classes and groupings

| | |
|-----------------|--|
| Standards | BS EN 124-2 DMRB MCHW CD 534 v0.1.0 |
| BS EN 124 Class | D400 |

BS EN 124 Group

3

4

Third party certified

Kitemark

CD 526 hydraulic capacity

P

Dimensions

Frame shape

Rectangular

Manhole shape

Rectangular

Overall frame (A x B)

1,100 mm x 1,100 mm

Clear opening (C x D)

900 mm x 900 mm

Frame depth (E)

150mm

Base opening (F x G)

925 mm x 925 mm

Waterway area

5,100cm²

AVAILABLE OPTIONS

✓ Screw locking

Screw locking deters unauthorised access to the chamber. An extended shank socket set is required to engage the locking screw.

ACCESSORIES

| STOCK CODE | DESCRIPTION |
|--------------------|--|
| PC/UNIFORM/151076 | Uniform chamber adjustment unit 760mm x 100mm x 15mm |
| PC/UNIFORM/251076 | Uniform chamber adjustment unit 760mm x 100mm x 25mm |
| PC/UNIWEDGE/755012 | Uniform support wedge 120mm x 50mm x 75mm |
| YPCR/U12.5 | 12.5Kg Unipak [®] rapid curing polyester resin mortar |
| YPCR/U25 | 25Kg Unipak [®] rapid curing polyester resin mortar |

| STOCK CODE | DESCRIPTION |
|------------|--|
| SCREWLIFT | Simple and rapid manhole frame levelling system. Simply push the bushes into the holes in the flange and adjust the levelling screws to the required height. |
| KEY/LONG | Large cover lifting keys with a long handle (sold as a pair) |
| KEYS/L | Small cover combined lifting key |

NOTES

This product range should not to be exposed to Group 5 traffic or above. The use of road plates is recommended where exposure to construction site traffic is likely.

The D400 load capability of these Group 3 products also offers the benefit of making them suitable for exposure to Group 4 traffic types. Where 3-flange D400 Gully Grate assemblies are employed, we recommend that they are installed against a kerb, not in an open highway location. All values stated are nominal within 2.5% tolerance.

1. Wrekin Products Ltd is continually seeking to improve our products and therefore reserves the right to alter product specifications without prior notice.
2. It is the responsibility of all users to satisfy themselves the above data is current.
3. Installation details are available in the [knowledge base](#).
4. All Wrekin products are supplied subject to our [Terms and Conditions of Sale](#)

