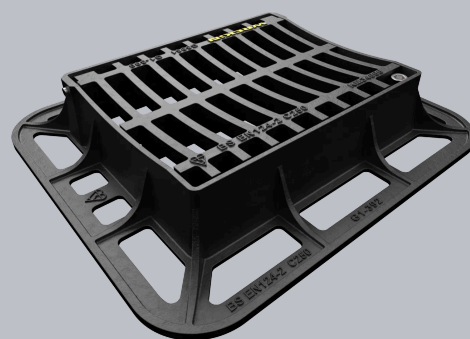
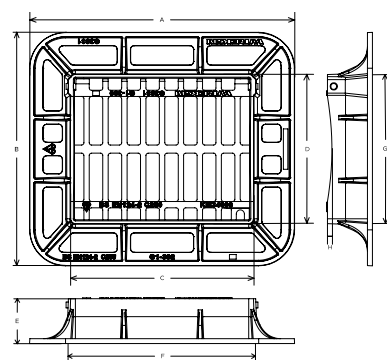


## DGHOC4/3931/K

Tristar C250 dished 4 flange gully grate 390mm x 315mm clear opening with 100mm frame depth



CHARACTERISTIC	VALUE
Range	Tristar
Clear opening (mm)	390 x 315
Base opening (mm)	415 x 340
Overall frame (mm)	590 x 520
Frame depth (mm)	100
Waterway area (cm <sup>2</sup> )	735
Options	► Screw locking



## SPECIFICATION

### GENERAL INFORMATION

Stock code	DGHOC4/3931/K
Primary material	Ductile iron
Range	Tristar
Category	Gully grate
Flanges	4

### STANDARDS, CLASSES AND GROUPINGS

Standards	BS EN 124-2 CD 526 (formerly HA 102/17)
BS EN 124 Class	C250
BS EN 124 Group	3
Third party certified	Kitemark
CD 526 hydraulic capacity	S

### DIMENSIONS

Frame shape	Rectangular
Manhole shape	Rectangular
Overall frame (A x B)	590 mm x 520 mm
Clear opening (C x D)	390 mm x 315 mm
Frame depth (E)	100mm
Base opening (F x G)	415 mm x 340 mm
Dished depth (H)	10mm
Waterway area	735cm <sup>2</sup>

### EPD DATA

Total life cycle (cradle to grave) 55.29 kg CO<sub>2</sub> equivalent



## FEATURES

- ✓ Captive hinges deter theft and allow safe, easy lifting during maintenance.

## AVAILABLE OPTIONS

- ✓ **Screw locking**  
Screw locking deters unauthorised access to the chamber. An extended shank socket set is required to engage the locking screw.

## ACCESSORIES

STOCK CODE	DESCRIPTION
PC/UNIFORM/151076	Uniform chamber adjustment unit 760mm x 100mm x 15mm
PC/UNIFORM/251076	Uniform chamber adjustment unit 760mm x 100mm x 25mm
PC/UNIWEDGE/755012	Uniform support wedge 120mm x 50mm x 75mm
YPCR/U12.5	12.5Kg Unipak <sup>®</sup> rapid curing polyester resin mortar
YPCR/U25	25Kg Unipak <sup>®</sup> rapid curing polyester resin mortar

## NOTES

- ▶ This product has a dished gully top arrangement.
- ▶ All information provided is subject to change without notice. While every effort is made to ensure accuracy and relevance, Wrekin Products Ltd. does not warrant the completeness or reliability of the information contained herein. Photographs, illustrations, and other visual materials are provided for illustrative purposes only.
- ▶ Wrekin Products Ltd. reserves the right to make design amendments or improvements to any product at any time, where such changes enhance performance or durability, without affecting compliance with the stated standards.
- ▶ Where errors or omissions are identified, amendments will be made as quickly as possible.
- ▶ It is the responsibility of all users to satisfy themselves the above data is current.
- ▶ All values stated are nominal within 2.5% tolerance.
- ▶ Installation details are available in the [knowledge base](#).
- ▶ All Wrekin products are supplied subject to our [terms and conditions of sale](#).