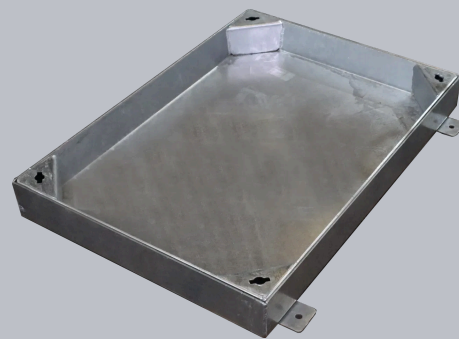


C291 X/090060

Steel Block Paviour Access Cover, 900mm x 600mm clear opening, 100mm tray depth, Loading code X



CHARACTERISTIC	VALUE
Clear opening (mm)	900 x 600
Overall top of frame (mm)	965 x 665
Frame depth (mm)	105
Load duty	Heavy duty

SPECIFICATION

GENERAL INFORMATION

Stock code	C291X/090060
Primary material	Steel
Category	Access cover
Gross laden vehicle weight	44 tn
Load duty	Heavy duty
Slow moving wheel load (pneumatic tyres)	11.5

STANDARDS, CLASSES AND GROUPINGS

Wrekin loading code	X
---------------------	---

DIMENSIONS

Frame shape	Rectangular
Manhole shape	Rectangular
Overall top of frame (A x B)	665 mm x 965 mm
Clear opening (C x D)	900 mm x 600 mm
Frame depth (E)	105mm
Overall base of frame	750 mm x 965 mm

FEATURES

- ✓ Hot dipped galvanised for corrosion resistance.
- ✓ Keyway lifting points are provided on the frame for safe handling.

- ▶ Wrekin Products Ltd is continually seeking to improve our products and therefore reserves the right to alter product specifications without prior notice.
- ▶ It is the responsibility of all users to satisfy themselves the above data is current.
- ▶ All values stated are nominal within 2.5% tolerance.
- ▶ Installation details are available in the [knowledge base](#).
- ▶ All Wrekin products are supplied subject to our [Terms and Conditions of Sale](#).

