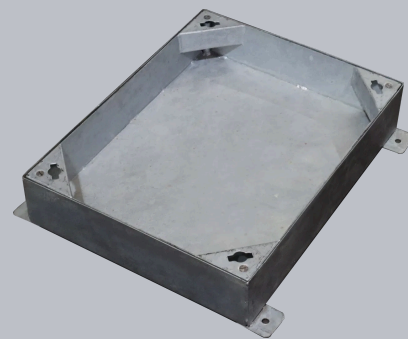


## C291N/060045/D4

Steel Block Paviour Access Cover, double seal, 600mm x 450mm clear opening, 100mm tray depth, Loading code N



CHARACTERISTIC	VALUE
Clear opening (mm)	600 x 450
Overall top of frame (mm)	655 x 505
Frame depth (mm)	132
Load duty	Medium / heavy duty

## SPECIFICATION

### GENERAL INFORMATION

Stock code	C291N/060045/D4
Primary material	Steel
Category	Access cover
Flanges	4
Gross laden vehicle weight	25 tn
Load duty	Medium / heavy duty
Slow moving wheel load (pneumatic tyres)	5 tn
Seal type	Double seal

### STANDARDS, CLASSES AND GROUPINGS

Wrekin loading code	N
---------------------	---

### DIMENSIONS

Frame shape	Rectangular
Manhole shape	Rectangular
Overall top of frame (A x B)	505 mm x 655 mm
Clear opening (C x D)	600 mm x 450 mm
Frame depth (E)	132mm
Overall base of frame	585 mm x 655 mm

## FEATURES

- ✓ Hot dipped galvanised for corrosion resistance.
- ✓ Keyway lifting points are provided on the frame for safe handling.

- ▶ Wrekin Products Ltd is continually seeking to improve our products and therefore reserves the right to alter product specifications without prior notice.
- ▶ It is the responsibility of all users to satisfy themselves the above data is current.
- ▶ All values stated are nominal within 2.5% tolerance.
- ▶ Installation details are available in the [knowledge base](#).
- ▶ All Wrekin products are supplied subject to our [Terms and Conditions of Sale](#).

