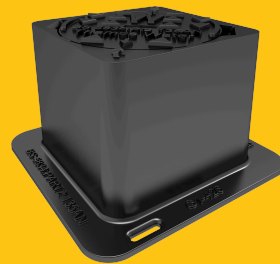


## TWKIT/A6/15D

Tristar D400 surface box 145mm diameter clear opening with 150mm frame depth comes with one 6.5kg tub of UniPak Mortar



RANGE	CLEAR OPENING (MM)	OVERALL FRAME (MM)	FRAME DEPTH (MM)
Tristar	145 x	255 x 250	150

## FEATURES

- ✓ The cover is connected to the frame with a chain, reducing the risk of theft.
- ✓ Indexed corners ensure correct orientation first time, every time.

## SPECIFICATION

### General information

Stock code	TWKIT/A6/15D
Primary material	Ductile iron
Range	Tristar
Category	Surface box
Flanges	4

### Standards, classes and groupings

Standards	BS5834
BS EN 124 Class	D400
BS EN 124 Group	4

## Dimensions

Frame shape	Rectangular
Manhole shape	Rectangular
Overall frame (A x B)	255 mm x 250 mm
Clear opening (C x D)	Ø 145 mm
Frame depth (E)	150mm
Base opening (F x G)	175 mm x 175 mm

## ACCESSORIES

STOCK CODE	DESCRIPTION
PC/UNIFORM/151076	Uniform chamber adjustment unit 760mm x 100mm x 15mm
PC/UNIFORM/251076	Uniform chamber adjustment unit 760mm x 100mm x 25mm
PC/UNIWEDGE/755012	Uniform support wedge 120mm x 50mm x 75mm
YPCR/U6.5	6.5Kg Unipak <sup>®</sup> rapid curing polyester resin mortar
KEYSLIGHT	Small cover lifting keys with a standard handle (sold as a pair)

## NOTES

All values stated are nominal within 2.5% tolerance.

1. Wrekin Products Ltd is continually seeking to improve our products and therefore reserves the right to alter product specifications without prior notice.
2. It is the responsibility of all users to satisfy themselves the above data is current.
3. Installation details are available in the [knowledge base](#).
4. All Wrekin products are supplied subject to our [Terms and Conditions of Sale](#)