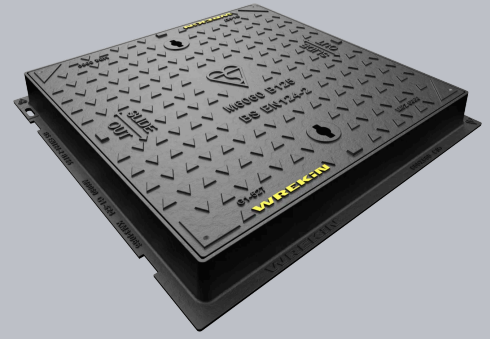
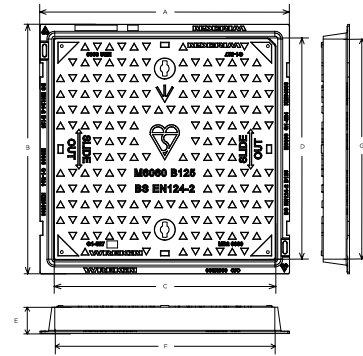


## TWKIT/B3/6060

Safeseal B125 manhole cover 600mm x 600mm clear opening with 75mm frame depth comes with one 12.5kg tub of UniPak Mortar



CHARACTERISTIC	VALUE
Range	Safeseal
Clear opening (mm)	600 x 600
Overall frame (mm)	710 x 710
Frame depth (mm)	75
Options	<ul style="list-style-type: none"> <li>▶ Screw locking</li> <li>▶ Neoprene seal</li> <li>▶ Standard badging</li> <li>▶ Safety grille</li> <li>▶ Flood and odour control plate</li> <li>▶ Pressure relief holes</li> </ul>



## SPECIFICATION

### GENERAL INFORMATION

Stock code	TWKIT/B3/6060
Primary material	Ductile iron
Range	Safeseal
Category	Manhole cover
Flanges	4

### STANDARDS, CLASSES AND GROUPINGS

Standards	BS EN 124-2
BS EN 124 Class	B125
BS EN 124 Group	2
Third party certified	Kitemark

### DIMENSIONS

Frame shape	Square
Manhole shape	Square
Overall frame (A x B)	710 mm x 710 mm
Clear opening (C x D)	600 mm x 600 mm
Frame depth (E)	75mm
Base opening (F x G)	650 mm x 650 mm

### EPD DATA

Total life cycle (cradle to grave)	82.25 kg CO <sub>2</sub> equivalent
------------------------------------	-------------------------------------



## FEATURES

- ✓ Labyrinth seal helps to prevent odour escapes and water ingress.
- ✓ Safety keyway prevents accidental disengagement of the lifting key during the handling process.
- ✓ 70+ PSRV tested at top surface of chequer by UKAS accredited 3rd party.
- ✓ Designed with tapered sides and centralised lifting points to allow the cover to slide out of the frame.
- ✓ Indexed corners ensure correct orientation first time, every time.

## AVAILABLE OPTIONS

- ✓ **Screw locking**  
Screw locking deters unauthorised access to the chamber. An extended shank socket set is required to engage the locking screw.
- ✓ **Neoprene seal**  
A neoprene seal can be included to reduce ingress and egress of dirt and gasses from the chamber.
- ✓ **Industry standard badging**  
Integral industry-standard badging e.g. SW (Storm Water) and FW (Foul Water). Details are taken at point of order.
- ✓ **Safety grille**  
Safety grilles prevent accidental chamber falls. Available in a variety of configurations; including bars and mesh as drop-in or hinged.
- ✓ **Flood and odour control plate**  
The flood and odour control plate is manufactured from steel and provides resistance to flood-water ingress and the chamber-odour egress.
- ✓ **Pressure relief holes**  
Pressure relief holes provide additional airflow, with sizes permitted up to the maximum allowances specified in BS EN 124.

## ACCESSORIES

STOCK CODE	DESCRIPTION
PC/UNIFORM/151076	Uniform chamber adjustment unit 760mm x 100mm x 15mm
PC/UNIFORM/251076	Uniform chamber adjustment unit 760mm x 100mm x 25mm
PC/UNIWEDGE/755012	Uniform support wedge 120mm x 50mm x 75mm
YPCR/U12.5	12.5Kg Unipak® rapid curing polyester resin mortar
YPCR/U25	25Kg Unipak® rapid curing polyester resin mortar
KEY/LONG	Large cover lifting keys with a long handle (sold as a pair)
KEYS/L	Small cover combined lifting key

- ▶ Wrekin Products Ltd is continually seeking to improve our products and therefore reserves the right to alter product specifications without prior notice.
- ▶ It is the responsibility of all users to satisfy themselves the above data is current.
- ▶ All values stated are nominal within 2.5% tolerance.
- ▶ Installation details are available in the [knowledge base](#).
- ▶ All Wrekin products are supplied subject to our [Terms and Conditions of Sale](#).