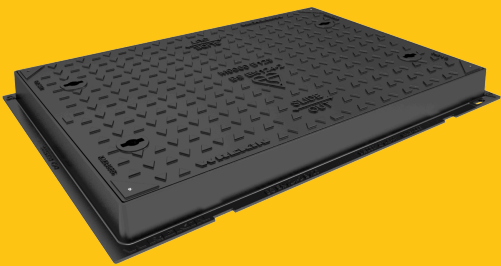


TWKIT/B3/9060

Safeseal B125 manhole cover 900mm x 600mm clear opening with 75mm frame depth comes with one 12.5kg tub of UniPak Mortar



RANGE	CLEAR OPENING (MM)	OVERALL FRAME (MM)	FRAME DEPTH (MM)	OPTIONS
Safeseal	900 x 600	1,010 x 710	75	<div><input type="checkbox"/> Screw locking</div> <div><input type="checkbox"/> Neoprene seal</div> <div><input type="checkbox"/> Standard badging</div> <div><input type="checkbox"/> Safety grille</div> <div><input type="checkbox"/> Pressure release holes</div> <div><input type="checkbox"/> Flood and odour control plate</div>

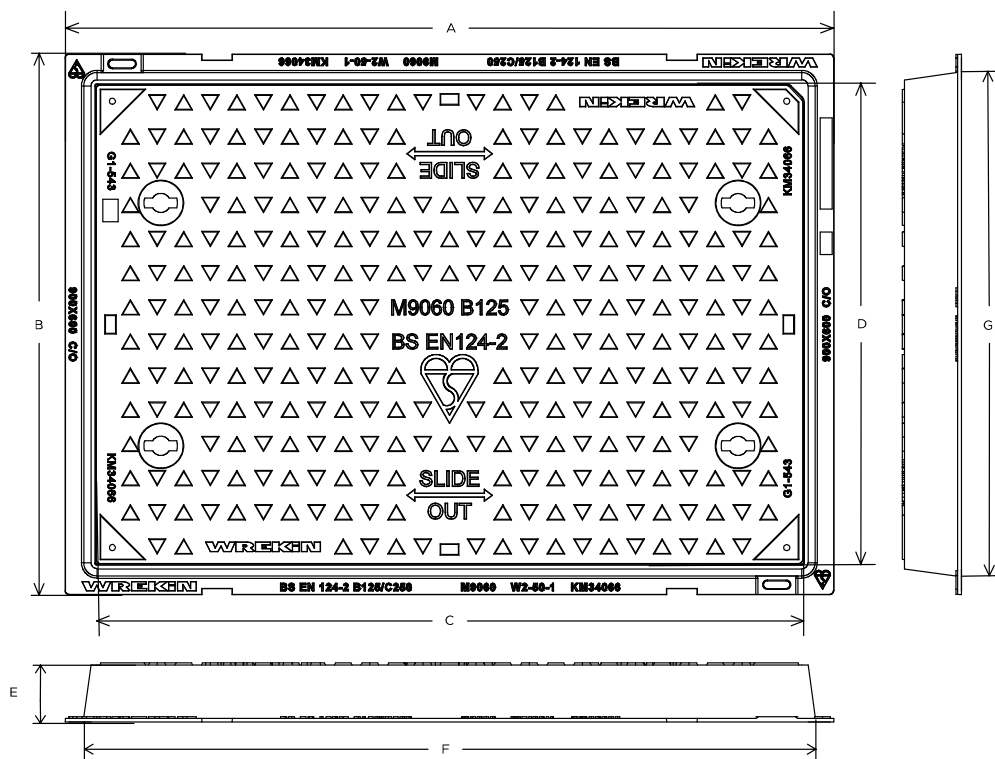
FEATURES

- ✓ Indexed corners ensure correct orientation first time, every time.

✓ Safety keyway prevents accidental disengagement of the lifting key during the handling process.

✓ Designed with tapered sides and centralised lifting points to allow the cover to slide out of the frame.
- ✓ Labyrinth seal helps to prevent odour escapes and water ingress.

✓ 70+ PSRV tested at top surface of chequer by UKAS accredited 3rd party.



SPECIFICATION

General information

Stock code	TWKIT/B3/9060
Primary material	Ductile iron
Range	Safeseal
Category	Manhole cover
Flanges	4

Standards, classes and groupings

Standards	BS EN 124-2
BS EN 124 Class	B125
BS EN 124 Group	2

Third party certified

Kitemark

Dimensions

Frame shape

Rectangular

Manhole shape

Rectangular

Overall frame (A x B)

1,010 mm x 710 mm

Clear opening (C x D)

900 mm x 600 mm

Frame depth (E)

75mm

Base opening (F x G)

950 mm x 650 mm

AVAILABLE OPTIONS

✓ Screw locking

Screw locking deters unauthorised access to the chamber. An extended shank socket set is required to engage the locking screw.

✓ Industry standard badging

Integral industry-standard badging e.g. SW (Storm Water) and FW (Foul Water). Details are taken at point of order.

✓ Pressure release holes

Pressure release holes provide additional airflow, with sizes permitted up to the maximum allowances specified in BS EN 124.

✓ Neoprene seal

A neoprene seal can be included to reduce ingress and egress of dirt and gasses from the chamber.

✓ Safety grille

Safety grilles prevent accidental chamber falls. Available in a variety of configurations; including bars and mesh as drop-in or hinged.

✓ Flood and odour control plate

The flood and odour control plate is manufactured from steel and provides resistance to flood-water ingress and the chamber-odour egress.

ACCESSORIES

STOCK CODE	DESCRIPTION
PC/UNIFORM/151076	Uniform chamber adjustment unit 760mm x 100mm x 15mm
PC/UNIFORM/251076	Uniform chamber adjustment unit 760mm x 100mm x 25mm
PC/UNIWEDGE/755012	Uniform support wedge 120mm x 50mm x 75mm
YPCR/U12.5	12.5Kg Unipak® rapid curing polyester resin mortar

STOCK CODE	DESCRIPTION
YPCR/U25	25Kg Unipak [®] rapid curing polyester resin mortar
KEY/LONG	Large cover lifting keys with a long handle (sold as a pair)
KEYS/L	Small cover combined lifting key

NOTES

All values stated are nominal within 2.5% tolerance.

1. Wrekin Products Ltd is continually seeking to improve our products and therefore reserves the right to alter product specifications without prior notice.
2. It is the responsibility of all users to satisfy themselves the above data is current.
3. Installation details are available in the [knowledge base](#).
4. All Wrekin products are supplied subject to our [Terms and Conditions of Sale](#)

