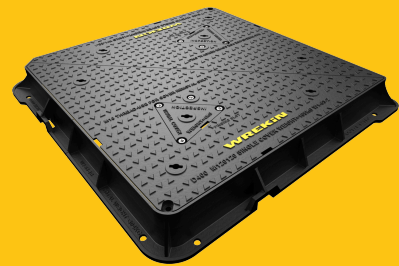


TWKIT/D6/1212

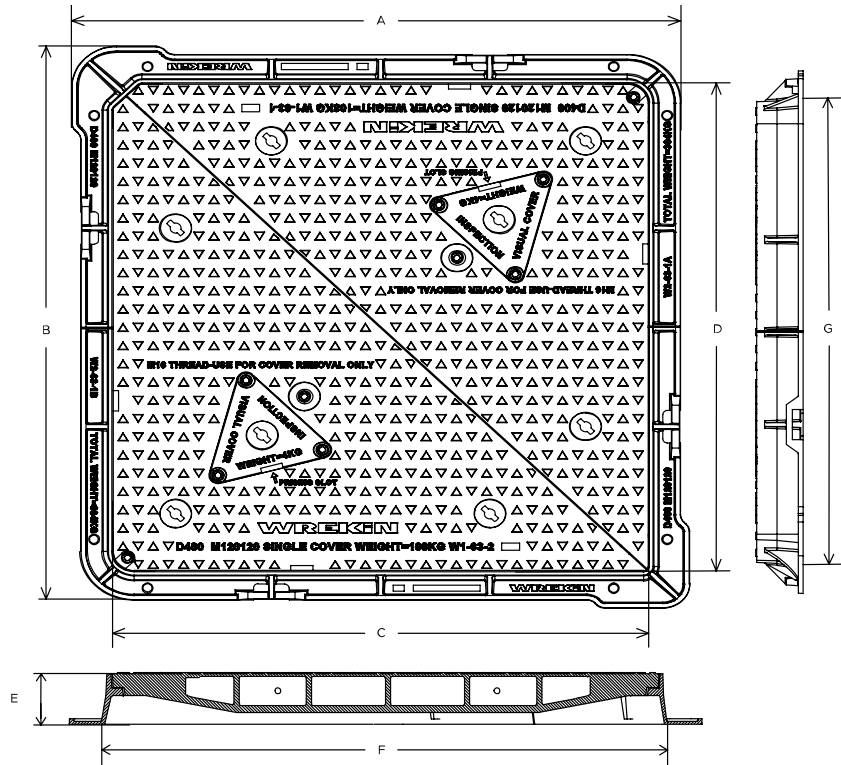
Hercules D400 manhole cover 1200mm x 1200mm clear opening with 150mm frame depth comes with two 25kg tubs of UniPak Mortar



RANGE	CLEAR OPENING (MM)	OVERALL FRAME (MM)	FRAME DEPTH (MM)	OPTIONS
Hercules	1,200 x 1,200	1,385 x 1,385	150	<input type="checkbox"/> Pressure release holes <input type="checkbox"/> Safety grille <input type="checkbox"/> Screw locking <input type="checkbox"/> Flood and odour control plate

FEATURES

- ✓ The enlarged frame corners help to dissipate loads onto the foundation, providing a longer service life and increased reliability.
- ✓ Mechanical lifting points are provided.
- ✓ 70+ PSRV tested at top surface of chequer by UKAS accredited 3rd party.
- ✓ Keyway lifting points are provided on the frame for safe handling.
- ✓ Inspection window allows safe and easy view into chamber.
- ✓ Safety keyway prevents accidental disengagement of the lifting key during the handling process.
- ✓ Indexed corners ensure correct orientation first time, every time.



SPECIFICATION

General information

Stock code	TWKIT/D6/1212
Primary material	Ductile iron
Range	Hercules
Category	Manhole cover
Flanges	4

Standards, classes and groupings

Standards	BS EN 124-2
BS EN 124 Class	D400
BS EN 124 Group	4

Dimensions

Frame shape	Rectangular
Manhole shape	Square
Overall frame (A x B)	1,385 mm x 1,385 mm
Clear opening (C x D)	1,200 mm x 1,200 mm
Frame depth (E)	150mm
Base opening (F x G)	1,230 mm x 1,230 mm

AVAILABLE OPTIONS

✓ Pressure release holes

Pressure release holes provide additional airflow, with sizes permitted up to the maximum allowances specified in BS EN 124.

✓ Screw locking

Screw locking deters unauthorised access to the chamber. An extended shank socket set is required to engage the locking screw.

✓ Safety grille

Safety grilles prevent accidental chamber falls. Available in a variety of configurations; including bars and mesh as drop-in or hinged.

✓ Flood and odour control plate

The flood and odour control plate is manufactured from steel and provides resistance to flood-water ingress and the chamber-odour egress.

ACCESSORIES

STOCK CODE	DESCRIPTION
PC/UNIFORM/151076	Uniform chamber adjustment unit 760mm x 100mm x 15mm
PC/UNIFORM/251076	Uniform chamber adjustment unit 760mm x 100mm x 25mm
PC/UNIWEDGE/755012	Uniform support wedge 120mm x 50mm x 75mm
YPCR/U12.5	12.5Kg Unipak [®] rapid curing polyester resin mortar
YPCR/U25	25Kg Unipak [®] rapid curing polyester resin mortar
SCREWLIFT	Simple and rapid manhole frame levelling system. Simply push the bushes into the holes in the flange and adjust the levelling screws to the required height.

STOCK CODE	DESCRIPTION
GRITBLOCKER	Anti-blockage keyway insert
KEY/LONG	Large cover lifting keys with a long handle (sold as a pair)
KEYS/L	Small cover combined lifting key
KEY/LIFTINGEYE	M16 50mm threaded lifting loops (sold as a pair)

NOTES

- BS EN 124 and CD 534 apply to products with a clear opening up to 1 metre. The Hercules range of access covers have a clear opening greater than this, however load capability and design features exceed the requirements of these documents.
- Please note that Hercules 1,200 x 1,200mm cover has keyholes for manual lifting.
- All values stated are nominal within 2.5% tolerance.

1. Wrekin Products Ltd is continually seeking to improve our products and therefore reserves the right to alter product specifications without prior notice.
2. It is the responsibility of all users to satisfy themselves the above data is current.
3. Installation details are available in the [knowledge base](#).
4. All Wrekin products are supplied subject to our [Terms and Conditions of Sale](#)

