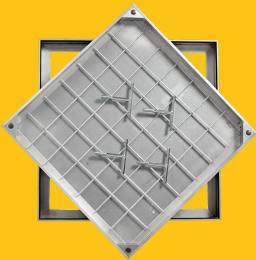
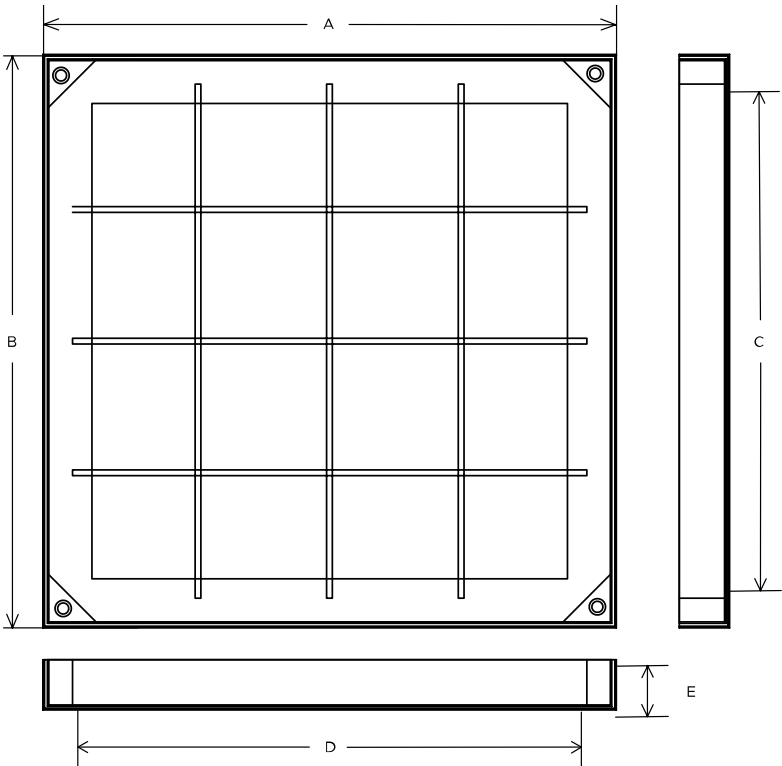


CALPRO60N/090060

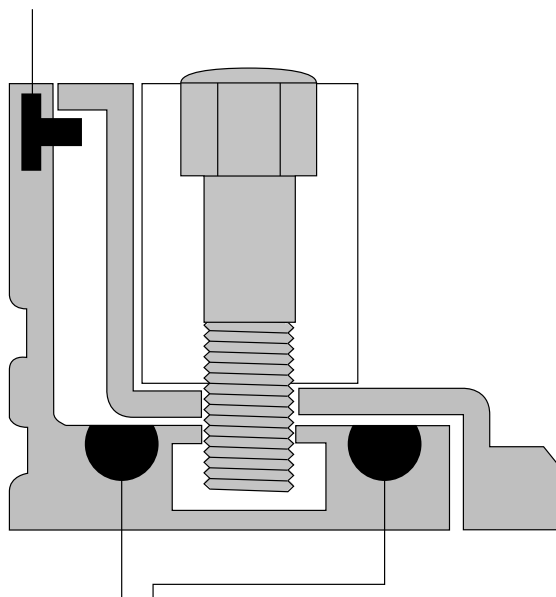
Triple sealed Aluminium Recessed Access Cover, 900mm x 600mm clear opening, 40mm tray depth, 60mm frame depth, Loading code N



CLEAR OPENING (MM)	OVERALL TOP OF FRAME (MM)	FRAME DEPTH (MM)	LOAD DUTY
900 x 600	990 x 690	60	Medium duty



EPDM T Gasket



2x EPDM 8mm Gaskets

SPECIFICATION

General information

Stock code	CALPRO60N/090060
Primary material	Aluminium
Category	Access cover
Flanges	4
Gross laden vehicle weight	25 tn
Load duty	Medium duty
Slow moving wheel load (pneumatic tyres)	5 tn
Seal type	Triple seal

Standards, classes and groupings

Wrekin loading code N

Dimensions

Overall frame (A x B)

Overall top of frame (A x B)

690 mm x 990 mm

Clear opening (C x D)

900 mm x 600 mm

Frame depth (E)

60mm

Base opening (F x G)

1. Wrekin Products Ltd is continually seeking to improve our products and therefore reserves the right to alter product specifications without prior notice.
2. It is the responsibility of all users to satisfy themselves the above data is current.
3. Installation details are available on request.
4. All Wrekin products are supplied subject to our [Terms and Conditions of Sale](#)

