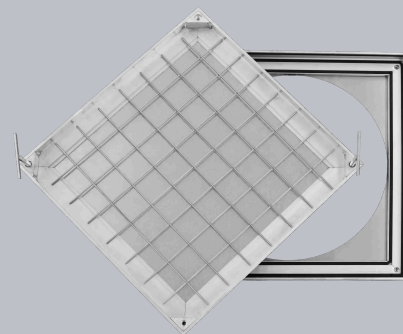
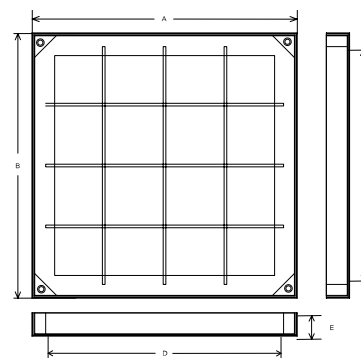


## CALPRO60N/045045/SQR

Triple sealed Aluminium Recessed Access Cover, 450mm diameter clear opening, 40mm tray depth, 60mm frame depth, Loading code N



CHARACTERISTIC	VALUE
Clear opening (mm)	450 Ø
Overall top of frame (mm)	540 x 540
Frame depth (mm)	60
Load duty	Medium duty



## SPECIFICATION

### GENERAL INFORMATION

Stock code	CALPRO60N/045045/SQR
Primary material	Aluminium
Category	Access cover
Flanges	4
Gross laden vehicle weight	25 tn
Load duty	Medium duty
Slow moving wheel load (pneumatic tyres)	5 tn
Seal type	Triple seal

### STANDARDS, CLASSES AND GROUPINGS

Wrekin loading code	N
---------------------	---

### DIMENSIONS

Overall top of frame (A x B)	540 mm x 540 mm
Clear opening (C x D)	Ø 450 mm
Frame depth (E)	60mm

- Wrekin Products Ltd is continually seeking to improve our products and therefore reserves the right to alter product specifications without prior notice.
- It is the responsibility of all users to satisfy themselves the above data is current.
- All values stated are nominal within 2.5% tolerance.
- Installation details are available in the [knowledge base](#).
- All Wrekin products are supplied subject to our [Terms and Conditions of Sale](#).