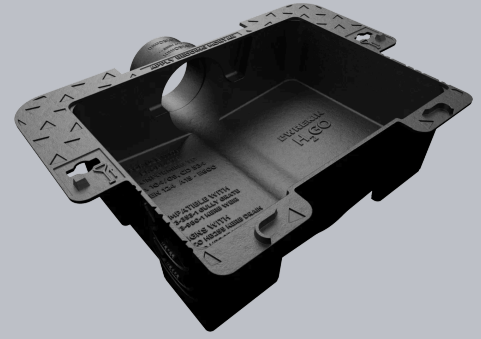
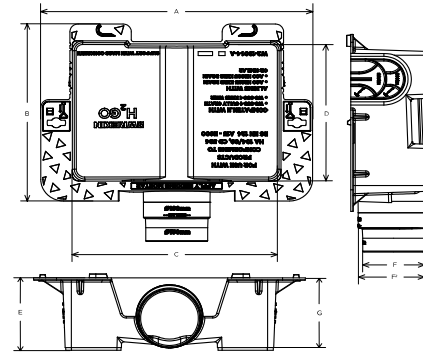


DGCC/6545/G

H2GO gully chute connector 655mm x 450mm x 185mm with 150mm and 160mm spigot sizes



CHARACTERISTIC	VALUE
Description	H2GO gully chute connector 655mm x 450mm x 185mm with 150mm and 160mm spigot sizes



SPECIFICATION

GENERAL INFORMATION

Stock code	DGCC/6545/G
------------	-------------

DIMENSIONS

Overall frame (A x B)	655 mm x 450 mm
Clear opening (C x D)	500 mm x 350 mm
Frame depth (E)	185mm
Spigot sizes (F)	150mm
	160mm

NOTES

COMPATIBLE WITH

Stock code	Description
DGHTOD4/5035/KH	Highway D400 3 flange gully grate clear opening 480mm x 320mm clear opening with 100mm frame depth

EPD DATA

Total life cycle (cradle to grave)	0 kg CO ₂ equivalent
------------------------------------	---------------------------------



Help us improve

Stock code	Description
DGHT0D6/5035/KH	Highway D400 3 flange gully grate clear opening 480mm x 320mm clear opening with 150mm frame depth
DGK115/HB/KG	H2GO D400 kerb unit 440mm x 305mm clear opening with 150mm frame depth

BEDDING REQUIREMENTS

Bed on a minimum 10mm mortar/concrete base and surround with concrete.

- ▶ Wrekin Products Ltd is continually seeking to improve our products and therefore reserves the right to alter product specifications without prior notice.
- ▶ It is the responsibility of all users to satisfy themselves the above data is current.
- ▶ All values stated are nominal within 2.5% tolerance.
- ▶ Installation details are available in the [knowledge base](#).
- ▶ All Wrekin products are supplied subject to our [Terms and Conditions of Sale](#).

