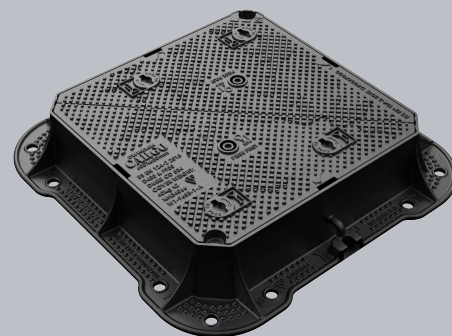


DMTOF6/6060/KCA

Cargo F900 manhole cover 610mm x 610mm clear opening with 150mm frame depth



CHARACTERISTIC	VALUE
Range	Cargo
Clear opening (mm)	610 x 610
Overall frame (mm)	815 x 815
Frame depth (mm)	150
Options	<ul style="list-style-type: none"> ▶ Flood and odour control plate ▶ Safety grille ▶ Screw locking ▶ Pressure relief holes

SPECIFICATION

GENERAL INFORMATION

Stock code	DMTOF6/6060/KCA
Primary material	Ductile iron
Range	Cargo
Category	Manhole cover
Flanges	4

STANDARDS, CLASSES AND GROUPINGS

Standards	BS EN 124-2 BS7903 DMRB MCHW CD 534 v0.1.0
BS EN 124 Class	F900
BS EN 124 Group	6
Third party certified	Kitemark

DIMENSIONS

Frame shape	Square
Manhole shape	Square
Overall frame (A x B)	815 mm x 815 mm
Clear opening (C x D)	610 mm x 610 mm
Frame depth (E)	150mm
Base opening (F x G)	635 mm x 635 mm

EPD DATA

Total life cycle (cradle to grave)	272.84 kg CO ₂ equivalent
------------------------------------	--------------------------------------



FEATURES

- ✓ GritBlocker™ anti-blockage keyway insert comes pre-installed.
- ✓ The enlarged frame corners help to dissipate loads onto the foundation, providing a longer service life and increased reliability.
- ✓ Safety keyway prevents accidental disengagement of the lifting key during the handling process.
- ✓ Keyway lifting points are provided on the frame for safe handling.
- ✓ Mechanical lifting points are provided.
- ✓ 70+ PSRV tested at top surface of chequer by UKAS accredited 3rd party.
- ✓ Meets the requirements of CD 534 v0.1.0 (formerly HA 104/09).
- ✓ Indexed corners ensure correct orientation first time, every time.
- ✓ Unlike sharp, square-edged frames, rounded edges reduce stress concentrations and minimise crack formation.
- ✓ Surface texturing above and below the flange enables better mortar engagement, reducing any lateral movement which could result in cracking.
- ✓ The covers feature a universal beam (also known as an I beam) providing significant improvements to rigidity, reducing seat wear for an enhanced service life.
- ✓ Holes in the frame flange where mortar can pass between the underside and top side, creating an interlock, providing greater strength.

AVAILABLE OPTIONS

- ✓ **Flood and odour control plate**
The flood and odour control plate is manufactured from steel and provides resistance to flood-water ingress and the chamber-odour egress.
- ✓ **Safety grille**
Safety grilles prevent accidental chamber falls. Available in a variety of configurations; including bars and mesh as drop-in or hinged.
- ✓ **Screw locking**
Screw locking deters unauthorised access to the chamber. An extended shank socket set is required to engage the locking screw.
- ✓ **Pressure relief holes**
Pressure relief holes provide additional airflow, with sizes permitted up to the maximum allowances specified in BS EN 124.

ACCESSORIES

STOCK CODE	DESCRIPTION
PC/UNIFORM/151076	Uniform chamber adjustment unit 760mm x 100mm x 15mm
PC/UNIFORM/251076	Uniform chamber adjustment unit 760mm x 100mm x 25mm
PC/UNIWEDGE/755012	Uniform support wedge 120mm x 50mm x 75mm
YPCR/U12.5	12.5Kg Unipak® rapid curing polyester resin mortar
YPCR/U25	25Kg Unipak® rapid curing polyester resin mortar
SCREWLIFT	Simple and rapid manhole frame levelling system. Simply push the bushes into the holes in the flange and adjust the levelling screws to the required height.
KEY/LONG	Large cover lifting keys with a long handle (sold as a pair)

- ▶ Wrekin Products Ltd is continually seeking to improve our products and therefore reserves the right to alter product specifications without prior notice.
- ▶ It is the responsibility of all users to satisfy themselves the above data is current.
- ▶ All values stated are nominal within 2.5% tolerance.
- ▶ Installation details are available in the [knowledge base](#).
- ▶ All Wrekin products are supplied subject to our [Terms and Conditions of Sale](#).

