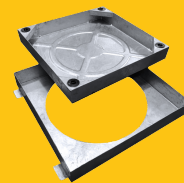



C281M/030030/SQR

Steel Recessed Access Cover, Square to round, 300mm diameter clear opening, 80mm depth, Loading code M



CLEAR OPENING (MM)	OVERALL TOP OF FRAME (MM)	FRAME DEPTH (MM)	LOAD DUTY
300 	340 x 340	85	Light / medium duty

KEY FEATURES

- ✓ Hot dipped galvanised for corrosion resistance.
- ✓ Keyway lifting points are provided on the frame for safe handling.

SPECIFICATION

General information

Stock code	C281M/030030/SQR
Primary material	Steel
Category	Access cover
Flanges	4
Gross laden vehicle weight	10 tn
Load duty	Light / medium duty
Slow moving wheel load (pneumatic tyres)	2.5

Standards, classes and groupings

Wrekin loading code M

Dimensions

Frame shape	Square
Manhole shape	Circular
Overall top of frame (A x B)	340 mm x 340 mm
Clear opening (C x D)	Ø 300 mm
Frame depth (E)	85mm
Base opening (F x G)	
Overall base of frame	440 mm x 340 mm

ACCESSORIES

STOCK CODE	DESCRIPTION
KEYSHEAVY	Large cover lifting keys with a standard handle (sold as a pair)

NOTES

Mild steel - Hot dip galvanised to BS EN ISO 1461

Lifting keys - Standard heavy-duty key (product code KEYSHEAVY)

1. Wrekin Products Ltd is continually seeking to improve our products and therefore reserves the right to alter product specifications without prior notice.
2. It is the responsibility of all users to satisfy themselves the above data is current.
3. Installation details are available on request.
4. All Wrekin products are supplied subject to our [Terms and Conditions of Sale](#)

