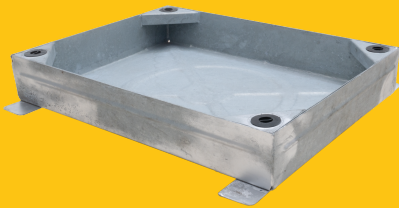


C291M/060045

Steel Recessed Access Cover, 600mm x 450mm clear opening, 100mm tray depth, Loading code M



CLEAR OPENING (MM)	OVERALL TOP OF FRAME (MM)	FRAME DEPTH (MM)	LOAD DUTY
600 x 450	640 x 490	105	Light / medium duty

KEY FEATURES

- ✓ Hot dipped galvanised for corrosion resistance.
- ✓ Keyway lifting points are provided on the frame for safe handling.

SPECIFICATION

General information

Stock code	C291M/060045
Primary material	Steel
Category	Access cover
Flanges	4
Gross laden vehicle weight	10 tn
Load duty	Light / medium duty
Slow moving wheel load (pneumatic tyres)	2.5

Standards, classes and groupings

Wrekin loading code M

Dimensions

Frame shape	Rectangular
Overall top of frame (A x B)	490 mm x 640 mm
Clear opening (C x D)	600 mm x 450 mm
Frame depth (E)	105mm
Base opening (F x G)	
Overall base of frame	590 mm x 640 mm

ACCESSORIES

STOCK CODE	DESCRIPTION
KEYSHEAVY	Large cover lifting keys with a standard handle (sold as a pair)

NOTES

Mild steel - Hot dip galvanised to BS EN ISO 1461

Lifting keys - Standard heavy-duty key (product code KEYSHEAVY)

1. Wrekin Products Ltd is continually seeking to improve our products and therefore reserves the right to alter product specifications without prior notice.
2. It is the responsibility of all users to satisfy themselves the above data is current.
3. Installation details are available on request.
4. All Wrekin products are supplied subject to our [Terms and Conditions of Sale](#)

